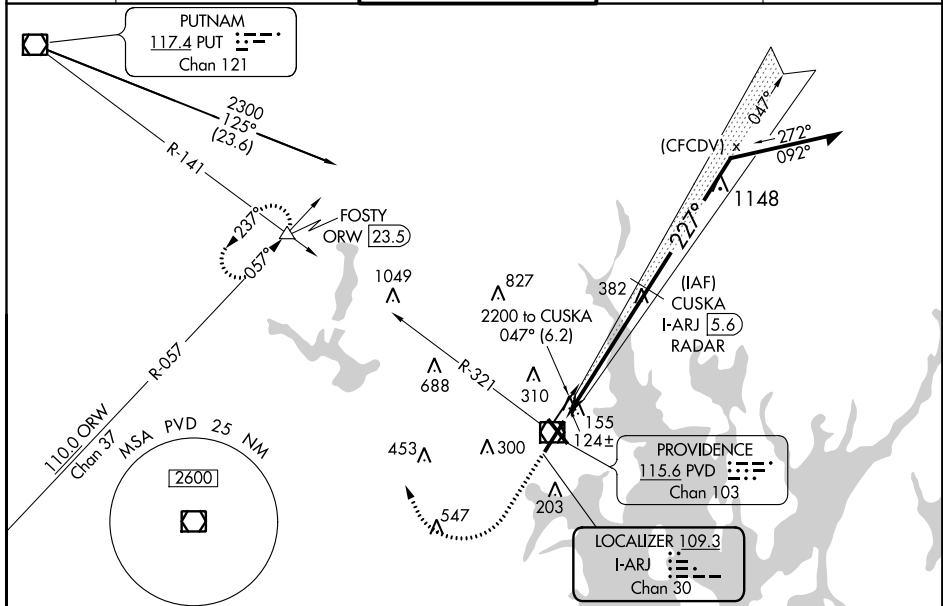


ILS RWY 23 (SA CAT I & II)
THEODORE FRANCIS GREEN STATE (PVD)

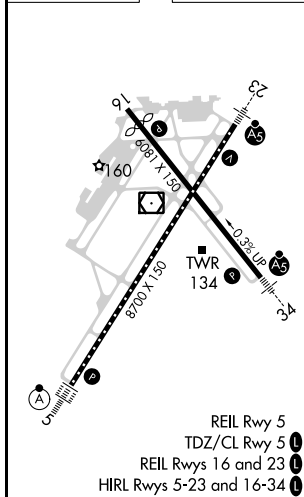
MISSED APPROACH: Climb to 700 then climbing right turn to 2500 on heading 350° and PVD VOR/DME R-321 to FOSTY INT/ORW 23.5 DME and hold.



D-ATIS 124.2	PROVIDENCE APP CON ★ 123.675 244.875	PROVIDENCE TOWER ★ 120.7 (CTAF) 0 257.8	GND CON 121.9 348.6	CLNC DEL 126.65 348.6
------------------------	--	---	-------------------------------	---------------------------------



ELEV 54		TDZE 50
---------	--	---------



700 ↑	2500 hdg 350°	PVD R-321	FOSTY △	CUSKA I-ARJ <u>5.6</u> RADAR	Remain within 10 NM
VGS1 and ILS glidepath not coincident (VGS1 Angle 3.00°/TCH 41°).				1900	047°
I-ARJ DME ANTENNA				227°	2200
9351				1900	GS 3.00° TCH 51
5.7 NM					
CATEGORY	A	B	C	D	
S-ILS 23	SA CAT I	RA 163/14	150 DA 200		
S-ILS 23	SA CAT II	RA 103/12	100 DA 150		

SA CATEGORY I & II ILS - SPECIAL AIRCREW
& AIRCRAFT CERTIFICATION REQUIRED