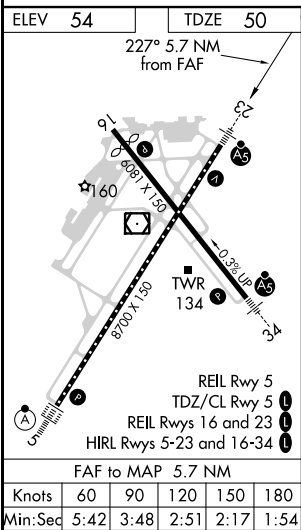
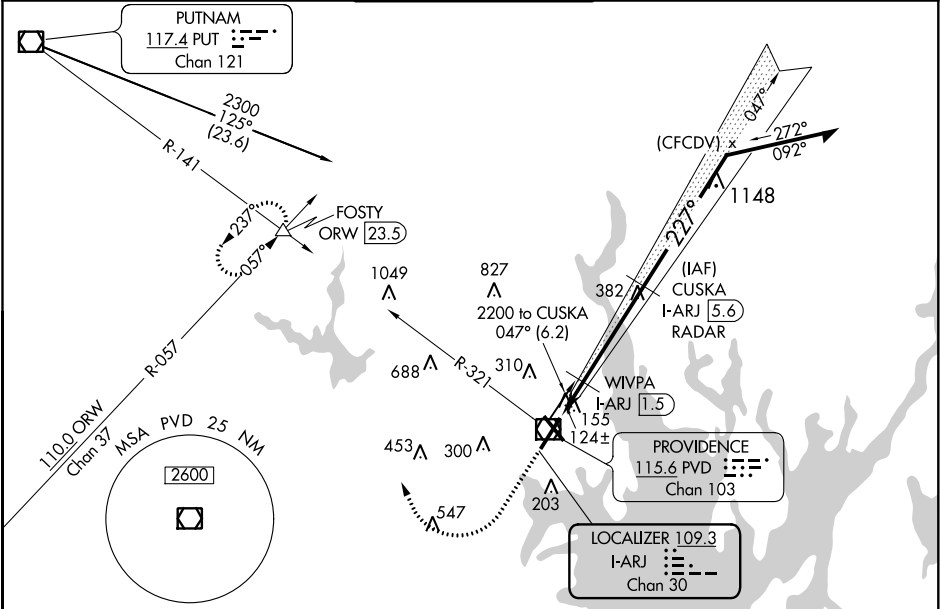


|               |         |          |      |
|---------------|---------|----------|------|
| LOC/DME I-ARJ | APP CRS | Rwy Idg  | 8700 |
| 109.3         | 227°    | TDZE     | 50   |
| Chan 30       |         | Apt Elev | 54   |

ILS or LOC RWY 23  
THEODORE FRANCIS GREEN STATE (PVD)

|   |       |  |
|---|-------|--|
| DME or RADAR required for procedure entry.                | MALSR | MISSED APPROACH: Climb to 700 then climbing right turn to 2500 on heading 350° and PVD VOR/DME R-321 to FOSTY INT/ORW 23.5 DME and hold. |
| ** RVR 1800 authorized with use of FD or AP or HUD to DA. |       |  |

|        |                      |                    |             |              |
|--------|----------------------|--------------------|-------------|--------------|
| D-ATIS | PROVIDENCE APP CON * | PROVIDENCE TOWER * | GND CON     | CLNC DEL     |
| 124.2  | 123.675 244.875      | 120.7 (CTAF) 257.8 | 121.9 348.6 | 126.65 348.6 |



|                    |         |     |      |           |       |   |
|--------------------|---------|-----|------|-----------|-------|---|
| ELEV 54            | TDZE 50 | 700 | 2500 | PVD R-321 | FOSTY | VGSI and ILS glidepath not coincident (VGSI Angle 3.00/TCH 41).                 |
| * LOC only.        |         |     |      |           |       | Remain within 10 NM   |
|                    |         |     |      |           |       | 047° 2200   |
| CATEGORY           |         |     |      |           |       | A B C D   |
| S-ILS 23**         |         |     |      |           |       | 250/24 200 (200-1/2)  |
| S-LOC 23           |         |     |      |           |       | 600/24 550 (600-1/2) 600/60 550 (600-1 1/4)                                     |
| CIRCLING           |         |     |      |           |       | 600-1 546 (600-1) 640-1 586 (600-1) 640-1 586 (600-1 1/2) 860-2 806 (900-2 1/2) |
| WIVPA FIX MINIMUMS |         |     |      |           |       |   |
| S-LOC 23           |         |     |      |           |       | 380/24 330 (400-1/2) 380/26 330 (400-1/2)                                       |
| CIRCLING           |         |     |      |           |       | 560-1 506 (600-1) 640-1 586 (600-1) 640-1 586 (600-1 1/2) 860-2 806 (900-2 1/2) |

NE-1, 31 DEC 2020 to 28 JAN 2021

NE-1, 31 DEC 2020 to 28 JAN 2021