

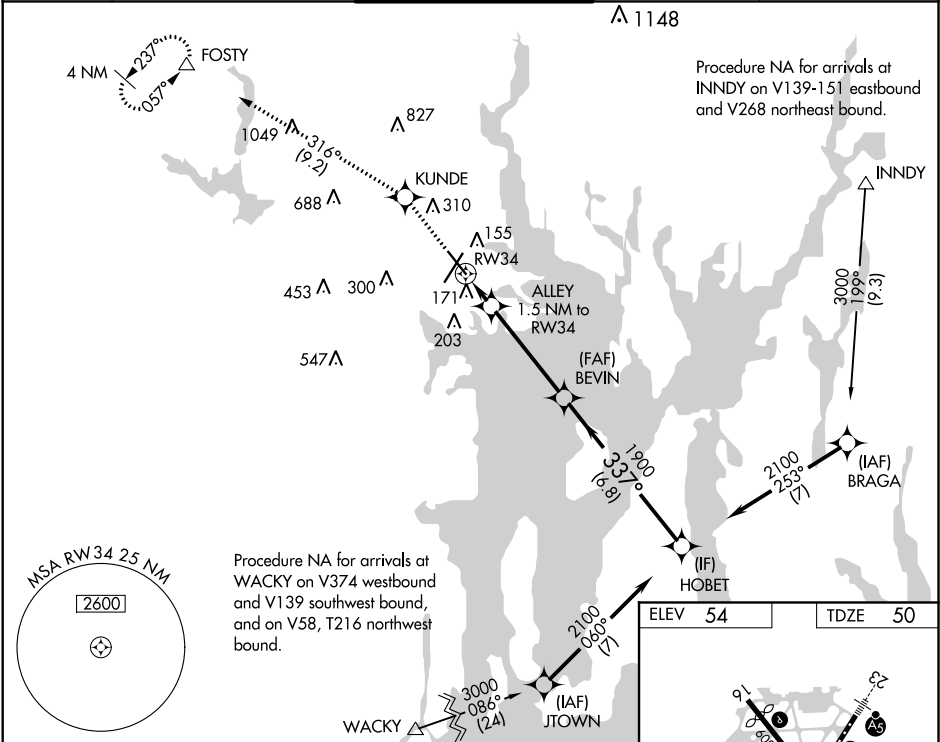
WAAS CH 58023 W34A	APP CRS 337°	Rwy Idg TDZE Apt Elev	6081 50 54
--	------------------------	-----------------------------	---------------------------------------

RNAV (GPS) RWY 34

THEODORE FRANCIS GREEN STATE (PVD)

RNP APCH	For uncompensated Baro-VNAV systems, LNAV/VNAV NA below -16°C or above 54°C. For inop MALSR, increase LNAV/VNAV all Cats visibility to RVR 5000. For inop MALSR, increase LNAV Cat A/B visibility to RVR 5500, and Cat C/D visibility to RVR 6000. Rwy 34 helicopter visibility reduction below RVR 4000 NA.	MALSR	MISSED APPROACH: Climb to 2500 direct KUNDE and on track 316° to FOSTY and hold.
----------	--	-------	---

D-ATIS 124.2	PROVIDENCE APP CON * 123.675 244.875	PROVIDENCE TOWER * 120.7 (CTAF) 0 257.8	GND CON 121.9 348.6	CLNC DEL 126.65 348.6
------------------------	--	---	-------------------------------	---------------------------------



2500	KUNDE	tr 316°	FOSTY	VGSI and RNAV glidepath not coincident (VGSI Angle 3.00/TCH 60.)	BEVIN	HOBET
*LNAV only.	ALLEY 1.5 NM to RW34				1900	2100
	RW34				1900	337°
						GP 3.00° TCH 53
	1.5 NM	4.2 NM	6.8 NM			
CATEGORY	A	B	C	D		
LPV DA		330/40	280 (300-¾)			
LNAV/VNAV DA		349/40	299 (300-¾)			
LNAV MDA		440/40	390 (400-¾)			
CIRCLING	560-1 506 (600-1)	640-1 586 (600-1)	640-1½ 586 (600-1½)	860-2½ 806 (900-2½)		