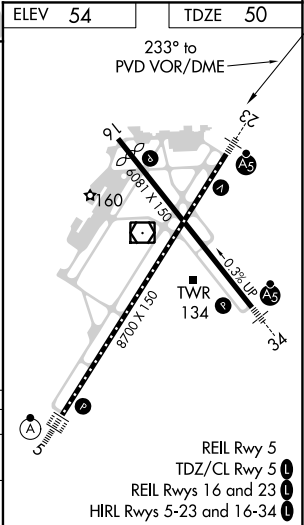
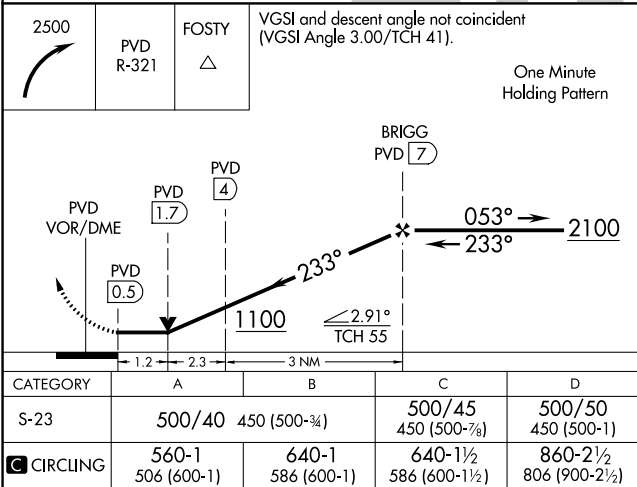
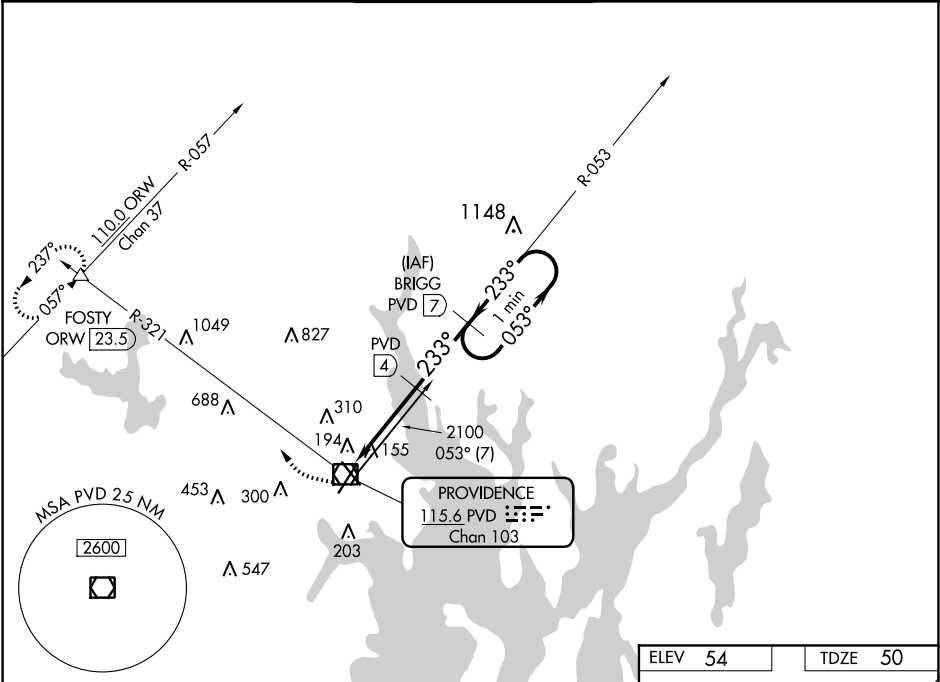


VOR/DME PVD 115.6 Chan 103	APP CRS 233°	Rwy Idg 8700 TDZE 50 Apt Elev 54
--	------------------------	---

VOR/DME RWY 23
THEODORE FRANCIS GREEN STATE (PVD)

<div><div></div><div></div></div> <div>For inoperative MALSR increase S-23 Cats A, B, and C visibility to RVR 5000, Cat D visibility to RVR 6000.</div>	<div><div></div><div></div></div> <div>MALSR</div>	MISSED APPROACH: Climbing right turn to 2500 via PVD R-321 to FOSTY INT and hold.
---	--	---

D-ATIS 124.2	PROVIDENCE APP CON ★ 123.675 244.875	PROVIDENCE TOWER ★ 120.7 (CTAF) 0 257.8	GND CON 121.9 348.6	CLNC DEL 126.65 348.6
------------------------	--	--	-------------------------------	---------------------------------



NE-1, 31 DEC 2020 to 28 JAN 2021

NE-1, 31 DEC 2020 to 28 JAN 2021