

VOR/DME PVD <u>115.6</u> Chan 103	APP CRS 326°	Rwy Idg TDZE Apt Elev	6081 50 54
---	------------------------	-----------------------------	---------------------------------------

VOR Y RWY 34

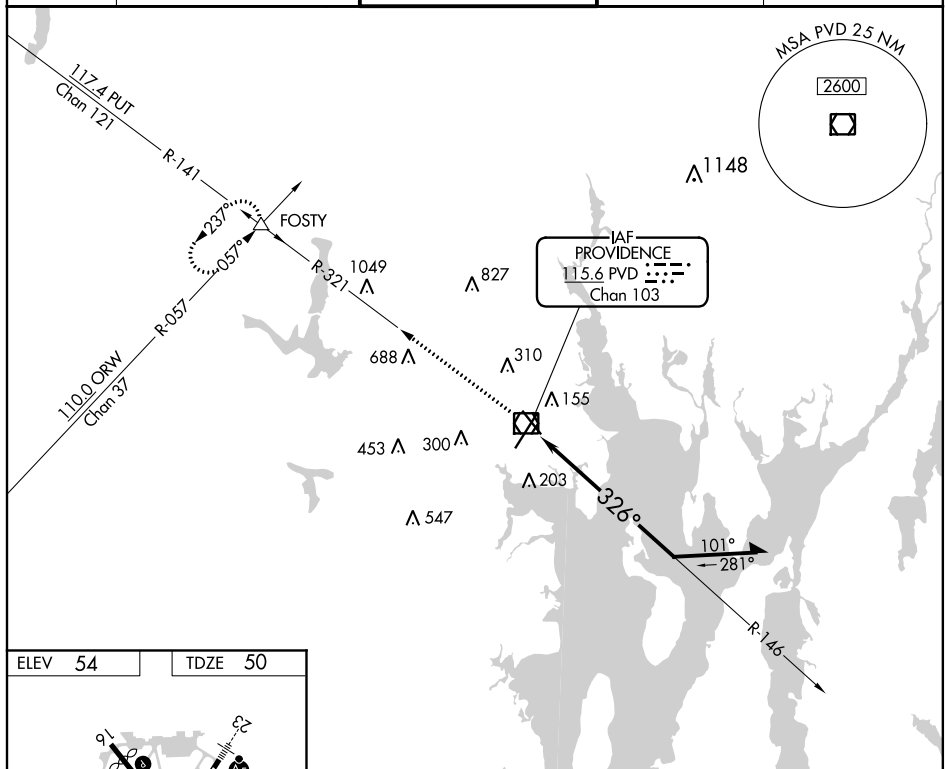
THEODORE FRANCIS GREEN STATE (PVD)

T Rwy 34 helicopter visibility reduction below RVR 4000 NA.
A For inop ALS, increase S-34 Cat A/B visibility to RVR 5500.

MALSR

MISSED APPROACH: Climb to 2500 on PVD VOR/DME R-321 to FOSTY INT and hold.

D-ATIS 124.2	PROVIDENCE APP CON ★ 123.675 244.875	PROVIDENCE TOWER ★ 120.7 (CTAF) 0 257.8	GND CON 121.9 348.6	CLNC DEL 126.65 348.6
-----------------	---	--	------------------------	--------------------------



ELEV 54

TDZE 50

90° 18.1 X 1.50

270° 18.1 X 1.50

TWR 134

0.3% UP

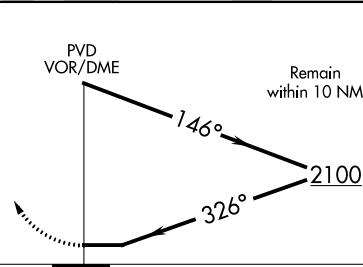
326° to PVD VOR/DME

REIL Rwy 5

TDZ/CL Rwy 5

REIL Rwy 16 and 23

HIRL Rwy 5-23 and 16-34

2500 ↑	PVD R-321	FOSTY △				
CATEGORY	A	B	C	D		
S-34	700/40	650 (700-¾)	700-1⅜	650 (700-1⅜)		
C CIRCLING	700-1	646 (700-1)	700-1⅞ 646 (700-1⅞)	860-2½ 806 (900-2½)		