

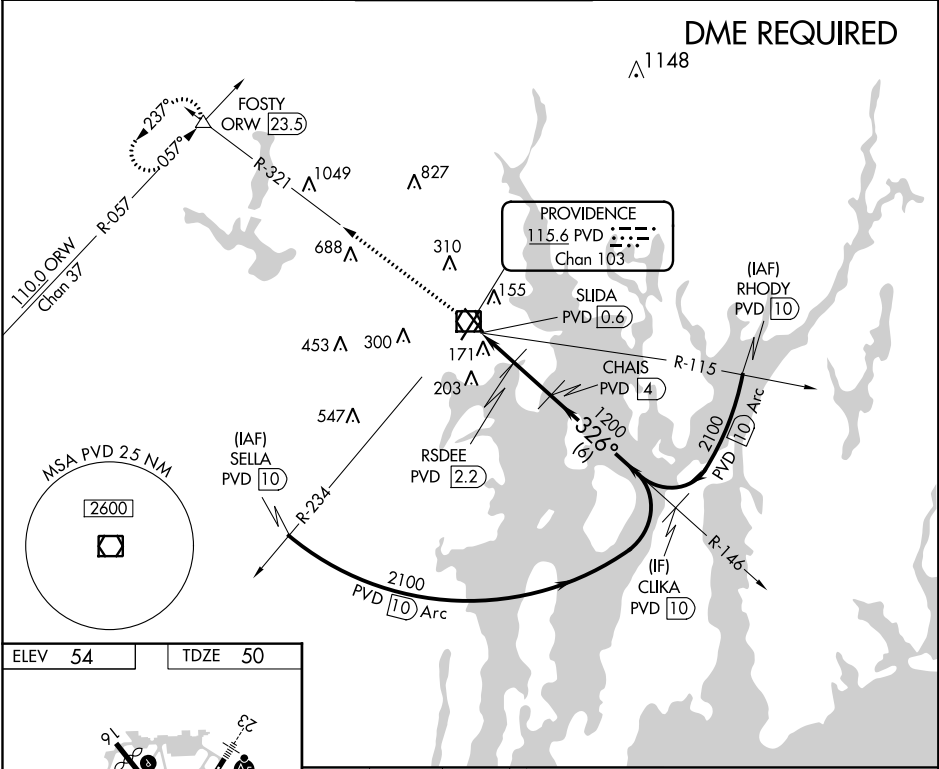
VOR/DME PVD	APP CRS	Rwy Idg	6081
<u>115.6</u>	<u>326°</u>	TDZE	50
Chan <u>103</u>		Apt Elev	54

VOR Z RWY 34

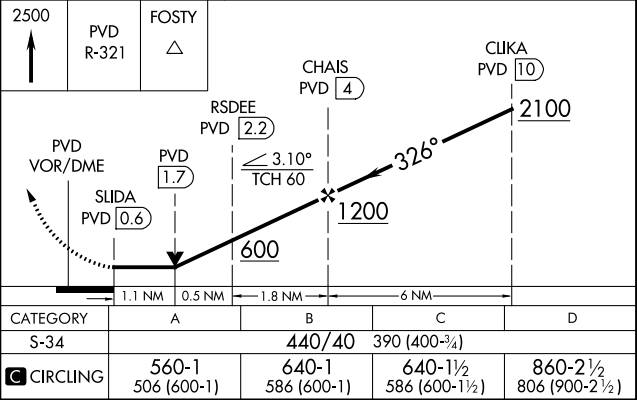
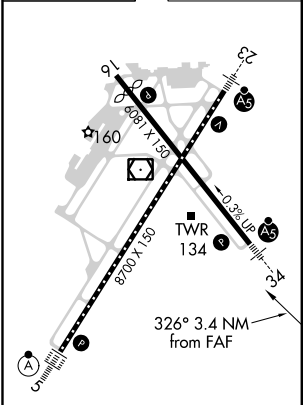
THEODORE FRANCIS GREEN STATE (PVD)

	Rwy 34 helicopter visibility reduction below RVR 4000 NA. DME required. For inop ALS, increase Cat A/B visibility to RVR 5500, and Cat C/D to RVR 6000.		MISSED APPROACH: Climb to 2500 on PVD VOR/DME R-321 to FOSTY INT/ ORW 23.5 DME and hold.
--	---	--	--

D-ATIS	PROVIDENCE APP CON *	PROVIDENCE TOWER *	GND CON	CLNC DEL
124.2	123.675 244.875	120.7 (CTAF) 0 257.8	121.9 348.6	126.65 348.6



ELEV 54	TDZE 50
---------	---------



NE-1, 31 DEC 2020 to 28 JAN 2021

NE-1, 31 DEC 2020 to 28 JAN 2021