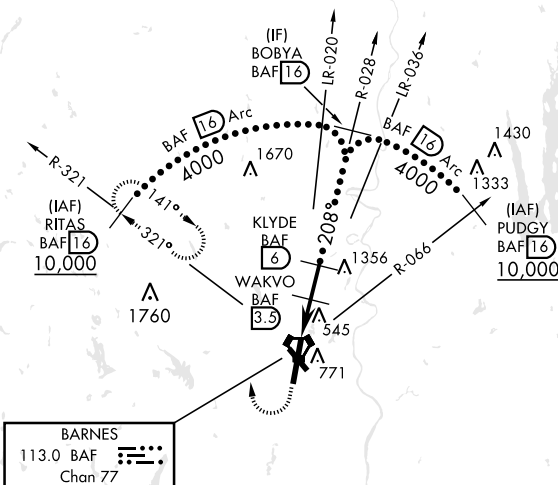
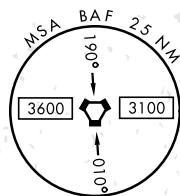


HI-TACAN RWY 20

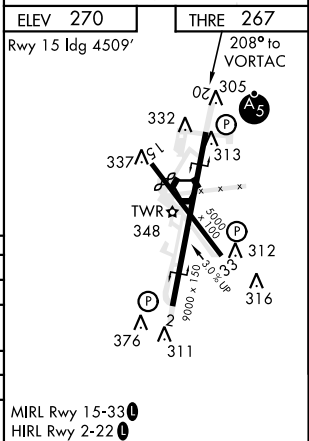
VORTAC BAF 113.0 Chan 77	APCH CRS 208°	Rwy Idg THRE 267 Arpt Elev 270	JAL-446 [USAF]	WESTFIELD-BARNES REGIONAL (KBAF)
V * When ALS inop, increase CAT CDE vis to 1½ miles. ** When ALS inop, increase CAT CDE vis to 1% miles.		MALSR A5	MISSED APPROACH: Climb to 1300, then climbing right turn to 4000 via hdg 010° and BAF VORTAC R-321 to RITAS and hold.	
ATIS 127.1 263.15	BRADLEY APP CON 125.35 281.5	WESTFIELD TOWER ★ 118.9 (CTAF) 251.1	GND CON 121.7 289.4	

When Icl altimeter setting not received, use Bradley Intl altimeter setting.
When VGSI inop, straight-in/circling Rwy 20 NA at night.
When VGSI inop, circling to Rwy 15, 33 NA at night.



EMERG SAFE ALT 100 NM 7000

1300	4000	RITAS R-321 16	VGSI and descent angles not coincident.	BOBYA R-028 16
↑	hdg 010°			
CATEGORY	C	D	E	
S-20*	800/55 533 (600-1¼)			
CIRCLING	1160-2¾ 890 (900-2¾)	1160-3 890 (900-3)	1640-3 1370 (1400-3)	
BRADLEY INTL ALTIMETER				
S-20**	840-1¾ 573 (600-1¾)			
CIRCLING	1200-2¾ 930 (1000-2¾)	1200-3 930 (1000-3)	1680-3 1410 (1500-3)	



HI-TACAN RWY 20