

WAAS CH 86405 W20A	APP CRS 204°	Rwy Idg 8919 TDZE 270 Apt Elev 270
--	------------------------	---

RNAV (GPS) RWY 20
WESTFIELD-BARNES RGNL (BAF)

⚠ Baro-VNAV NA when using Bradley Intl altimeter setting. For uncompensated Baro-VNAV systems, LNAV/VNAV NA below -15°C (5°F) or above 54°C (130°F). DME/DME RNP-0.3 NA. When local altimeter setting not received, use Bradley Intl altimeter setting and increase LPV DA to 561; LNAV/VNAV DA to 996 and increase all Cats visibility to 2½; all MDA 60 feet and LNAV Cats B, C, D and E visibility to 1¼. For inoperative MALSR, increase LPV Cat E visibility to RVR 4000, LNAV/VNAV all Cats visibility to 2½, LNAV Cat E visibility to 1½. Night landing: Rwy 15 NA.

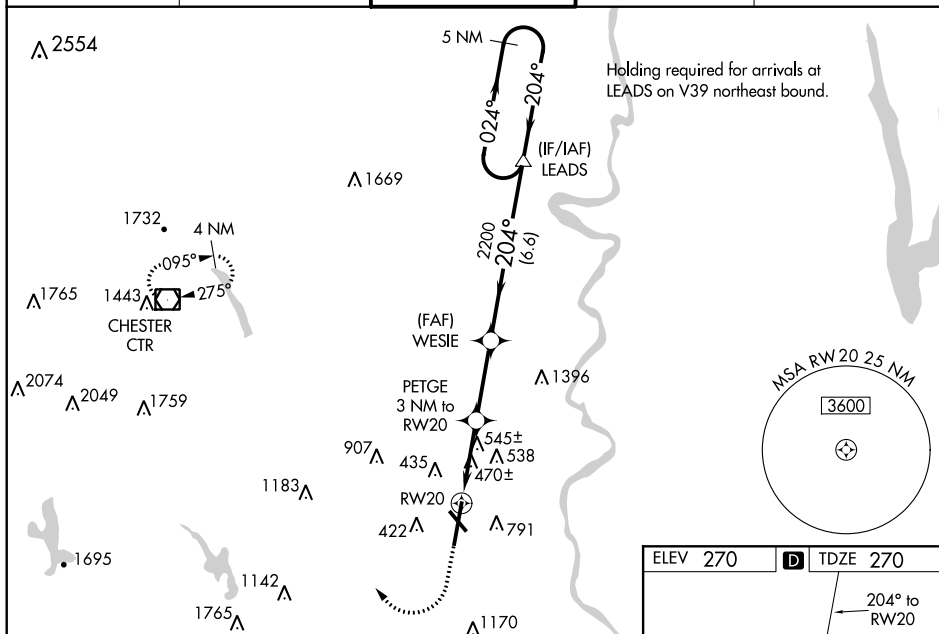
MALSR



MISSED APPROACH:
Climb to 1700 then
climbing right turn to
4000 direct CTR
VOR/DME and hold.

 -21°C

ATIS 127.1 263.15	YANKEE APP CON 125.35 281.5	WESTFIELD TOWER ★ 118.9 (CTAF) 0 251.1	GND CON 121.7 289.4	CLNC DEL 121.7 (when tower closed)
----------------------	--------------------------------	---	------------------------	--



1700	4000	CTR				
* LNAV only.			PETGE 3 NM to RW20 RW20 *1260 2200 GP 3.00° TCH 50° 024° 204° 3500			
CATEGORY	A		B	C	D	E
LPV DA	520/24		250 (300-½)			
LNAV/VNAV	955-1⅞		685 (700-1⅞)			
LNAV MDA	800/24	530 (600-½)	800/55	530 (600-1)		
C CIRCLING	1160-1¼	890 (900-1¼)	1160-2¾ 890 (900-2¾)	1660-3	1390 (1400-3)	

