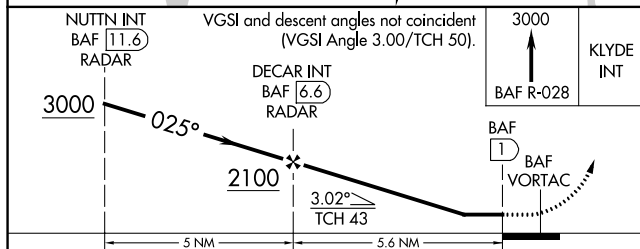
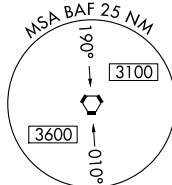


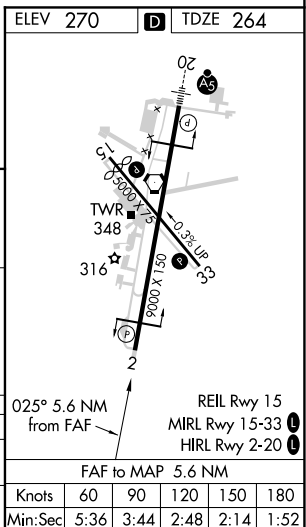
VOR or TACAN RWY 2
WESTFIELD-BARNES RGNL (BAF)

MISSED APPROACH: Climb to 3000 via the BAF
VORTAC R-028 to KLYDE INT and hold.

ATIS 127.1 263.15	YANKEE APP CON 125.35 281.5	WESTFIELD TOWER★ 118.9 (CTAF) 0 251.1	GND CON 121.7 289.4	CLNC DEL 121.7 (when tower closed)
----------------------	--------------------------------	--	------------------------	--



CATEGORY	A	B	C	D	E
S-2	780-1	516 (600-1)	780-1½ 516 (600-1½)	780-1¾	516 (600-1¾)
C CIRCLING	1160-1¼	890 (900-1¼)	1160-2¾ 890 (900-2¾)	1660-3	1390 (1400-3)



NE-1, 31 DEC 2020 to 28 JAN 2021