

RNAV (GPS) RWY 23

APCH CRS	Rwy Idg	11,598
228°	TDZE	241
	Arpt Elev	241

AL-447 (USAF)

WESTOVER ARB METROPOLITAN (KCEF)

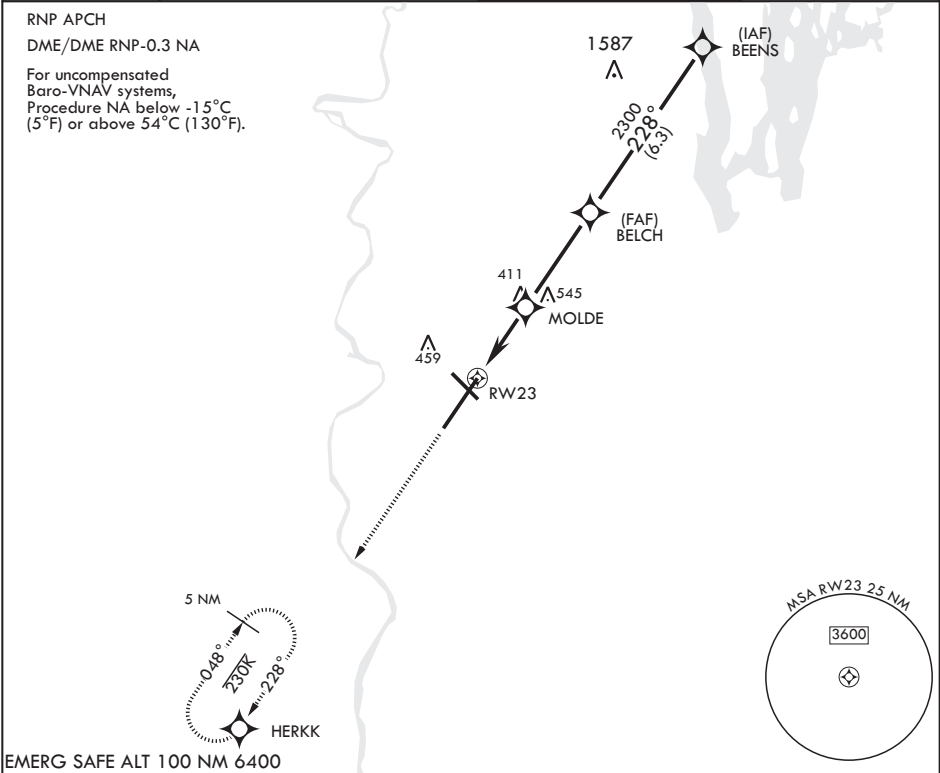
**⚠** \* When ALS inop, increase vis to 1 1/2 miles.  
\*\* When ALS inop, increase CAT AB RVR to 55, vis to 1 mile; CAT CDE vis to 1 3/4 miles.  
\*\*\* Circling not authorized from Rwy 23 clockwise to Rwy 33.

ALSF-1



MISSED APPROACH: Climb to 3000 direct HERKK and hold.


ATIS★ 127.525	BRADLEY APP CON/DEP CON 125.35 281.5	TOWER★ 134.85 (CTAF) 348.75	GND CON 118.35 275.8
------------------	---	--------------------------------	-------------------------



EMERG SAFE ALT 100 NM 6400

3000

HERKK



VGSI and RNAV glidepath not coincident (VGSI angle 3.00/TCH 64)

BEENS

2700

BELCH

228°

2300

MOLDE

1000†

RWY 23

† 1.7 NM to RWY 23

† LNAV only

GP 3.00° TCH 46

2.7 NM

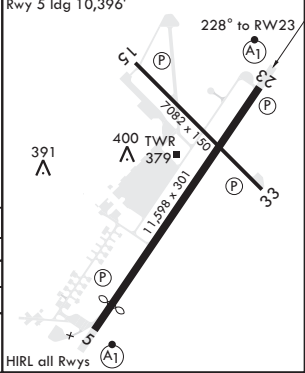
3.6 NM

CATEGORY	A	B	C	D	E
LNAV/VNAV DA*	776/55		535	(600-1)	
LNAV MDA**	840/24 599 (600-1/2)		840-1 1/4 599	(600-1 1/4)	
<b>C</b> CIRCLING***	840-1 599 (600-1)		840-1 3/4 599 (600-1 3/4)	980-2 1/4 739 (800-2 1/4)	1000-2 3/4 759 (800-2 3/4)

ELEV 241

Rwy 5 Idg 10,396'

TDZE 241



RNAV (GPS) RWY 23

NE-1, 31 DEC 2020 to 28 JAN 2021

NE-1, 31 DEC 2020 to 28 JAN 2021