

SPRINGFIELD CHICOPEE, MASSACHUSETTS

RNAV (GPS) RWY 5

APCH CRS	Rwy Idg	10,396
048°	TDZE	238
	Arpt Elev	241

AL-447 (USAF)

WESTOVER ARB METROPOLITAN (KCEF)

**⚠** \* When ALS inop increase vis to 1 3/8 miles.  
\*\* When ALS inop increase CAT AB RVR to 55, vis to 1 mile, CAT CDE vis to 1 3/8 miles.  
\*\*\* Circling not authorized all CAT acft from Rwy 23 clockwise to Rwy 33.

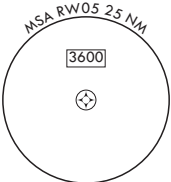
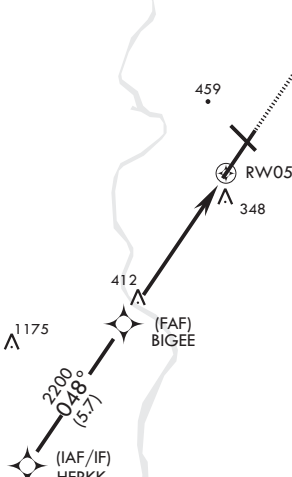
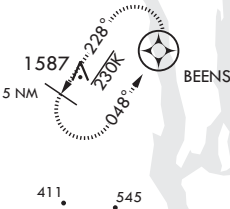
ALSF-1

MISSED APPROACH: Climb to 2700 direct BEENS and hold.

ATIS★ 127.525	BRADLEY APP CON/DEP CON 125.35 281.5	TOWER★ 134.85 (CTAF) 348.75	GND CON 118.35 275.8
------------------	---	--------------------------------	-------------------------

RNP APCH  
DME/DME RNP-0.3 NA.  
LNAV visibility reduction by Helicopters NA.  
For uncompensated Baro-VNAV systems, Procedure NA below -15°C (5°F) or above 54°C (130°F).

1549



EMERG SAFE ALT 100 NM 6400

HERKK

2500

048°

BIGEE

2200

GP 3.00° TCH 53

6 NM

RWY05

2700

BEENS

ELEV 241

Rwy 5 Idg 10,396'

TDZE 238

VGSI and RNAV glidepath not coincident (VGSI Angle 3.00/TCH 72 ft)

† LNAV only

† 1.2 NM to RWY05

391

BCN 406

TWR 379

11,598 x 301

048° to RWY05

HIRL all Rws

CATEGORY	A	B	C	D	E
LNAV/VNAV DA*	686/45		448	(500-7/8)	
LNAV MDA**	700/24 462 (500-1/2)		700/50	462	(500-1)
<b>C</b> CIRCLING***	800-1 559 (600-1)		840-1 1/2 599 (600-1 1/2)	980-2 1/4 739 (800-2 1/4)	1260-3 1019 (1100-3)

SPRINGFIELD CHICOPEE, MASSACHUSETTS

42°12'N - 72°32'W

WESTOVER ARB METROPOLITAN (KCEF)

Amtdt 1 25APR19

RNAV (GPS) RWY 5

NE-1, 31 DEC 2020 to 28 JAN 2021

NE-1, 31 DEC 2020 to 28 JAN 2021