
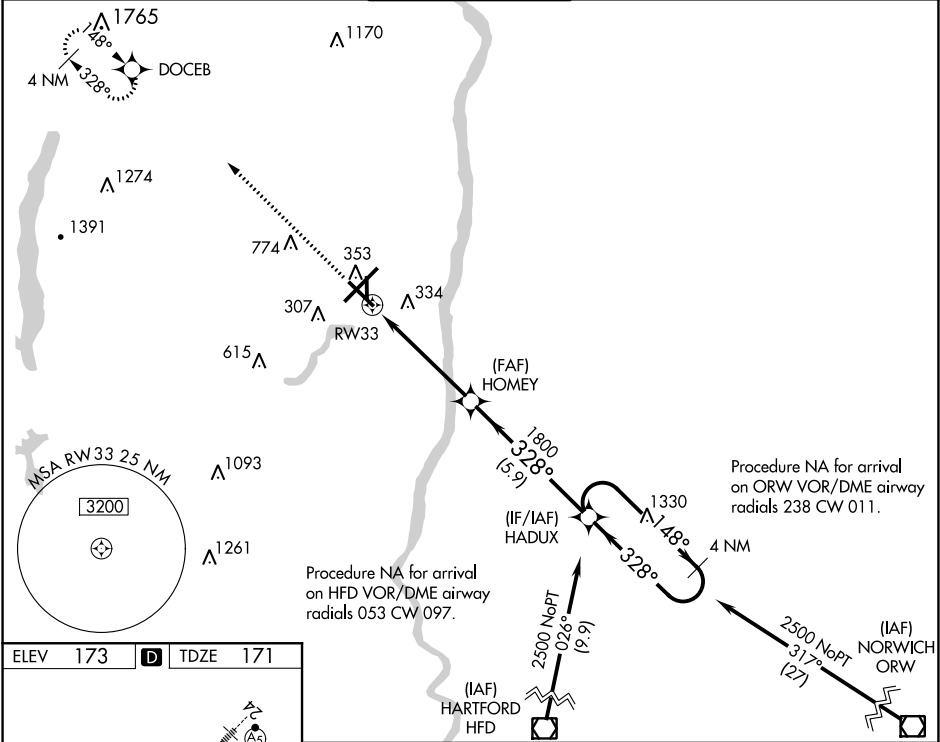


WAAS CH <b>65628</b> <b>W33A</b>	APP CRS <b>328°</b>	Rwy Idg TDZE <b>171</b> Apt Elev <b>173</b>
----------------------------------------	------------------------	---------------------------------------------------

RNAV (GPS) RWY 33

BRADLEY INTL (BDL)

<div>▼</div> <div>▲</div>	Inop table does not apply to LPV all Cats. For uncompensated Baro-VNAV systems, LNAV/VNAV NA below -17°C (2°F) or above 54°C (130°F). Circling Rwy 19 NA at night. DME/DME RNP-0.3 NA. For inop ALS, increase LNAV/VNAV all Cats visibility to RVR 4500.			MALSF	MISSED APPROACH: Climb to 3500 direct DOCEB and hold, continue climb-in-hold to 3500.			
								
D-ATIS	YANKEE APP CON		BRADLEY TOWER		GND CON		CLNC DEL	CPDLC
118.15	123.95 290.55 125.35 281.5		120.3 351.8		121.9 348.6		121.75 322.3	



ELEV 173	<b>D</b>	TDZE 171
----------	----------	----------

3500	DOCEB	VGSI and RNAV glidepath not coincident (VGSI Angle 3.00/TCH 72).	HADUX	4 NM Holding Pattern
<div>*LNAV only.</div>	<div>*1 NM to RW33</div>	<div>HOMEY</div>	<div>1800</div>	<div>1800</div>
<div>RW33</div>	<div>1 NM</div>	<div>3.9 NM</div>	<div>5.9 NM</div>	<div>2500</div>
<div>328° to RW33</div>	<div>148°</div>	<div>328°</div>	<div>148°</div>	<div>2500</div>
<div>GP 3.00° TCH 59</div>				
CATEGORY	A	B	C	D
LPV DA		371/40	200 (200-¾)	
LNAV/VNAV DA		463/40	292 (300-¾)	
LNAV MDA	560/40	389 (400-¾)	560/45	389 (400-¾)
<b>C</b> CIRCLING	700-1	527 (600-1)	1120-2¾ 947 (1000-1¾)	1220-3 1047 (1100-3)