

APP CRS  
**238°**


Rwy Idg  
**9509**

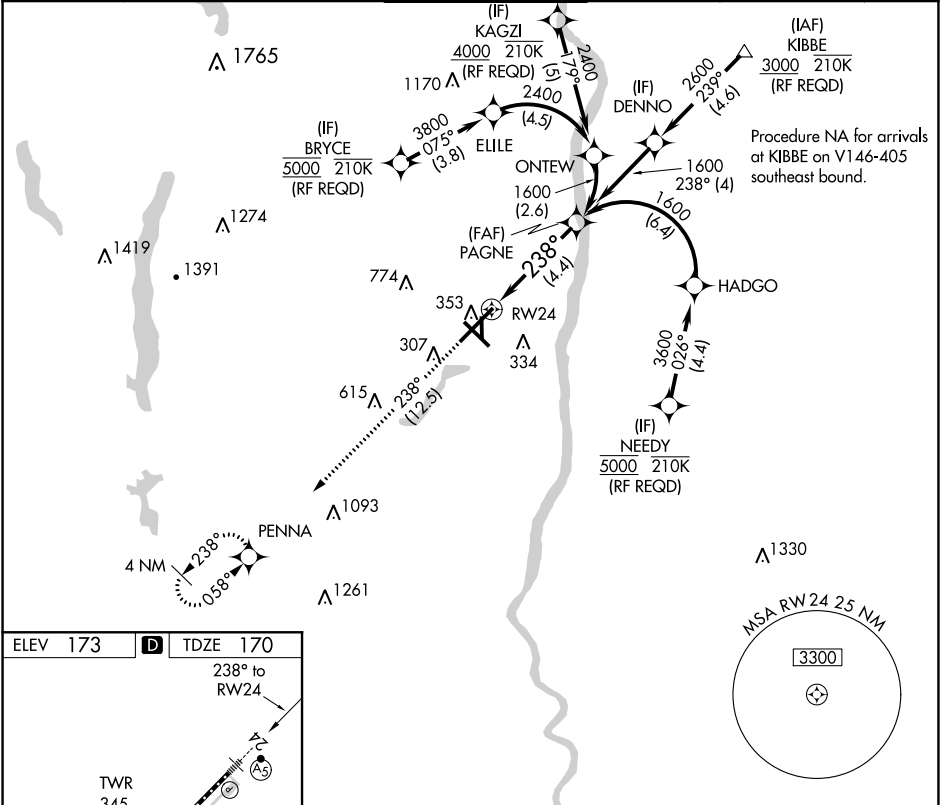
TDZE  
**170**

Apt Elev  
**173**

RNAV (RNP) Z RWY 24

BRADLEY INTL (BDL)

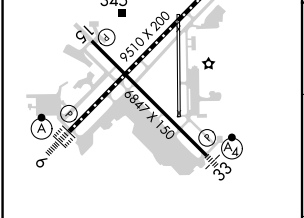
<div><div>▼</div><div>For uncompensated Baro-VNAV systems, procedure NA below -18°C (0°F) or above 54°C (130°F). GPS required. For inop ALS, increase all Cats visibility to 1½ SM.</div></div>			<div>MALSR</div> <div></div>		MISSED APPROACH: Climb to 3000 on track 238° to PENNA and hold.
D-ATIS <b>118.15</b>	YANKEE APP CON <b>123.95 290.55</b> (061°-240°) <b>125.35 281.5</b> (241°-060°)	BRADLEY TOWER <b>120.3 351.8</b>	GND CON <b>121.9 348.6</b>	CLNC DEL <b>121.75 322.3</b>	CPDLC



ELEV 173

**D**

TDZE 170



3000

PENNA

VGSi and RNAV glidepath not coincident (VGSi Angle 3.00/TCH 71).

PAGNE

1600

GP 3.00° TCH 55

TDZ/CL Rwy 6 and 24

HIRL Rwy 6-24 and 15-33

MIRL Rwy 1-19

REIL Rwy 6 and 15

CATEGORY	A	B	C	D
RNP 0.30 DA	622/60 452 (500-1¼)			

AUTHORIZATION REQUIRED