

APP CRS	Rwy Idg	9509
058°	TDZE	173
	Apt Elev	173

RNAV (RNP) Z RWY 6

BRADLEY INTL (BDL)

▼

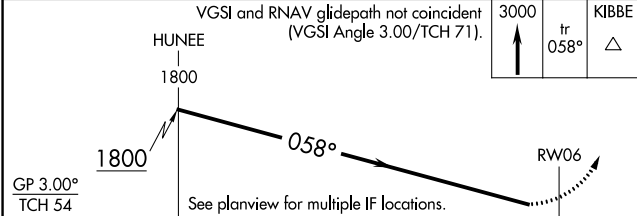
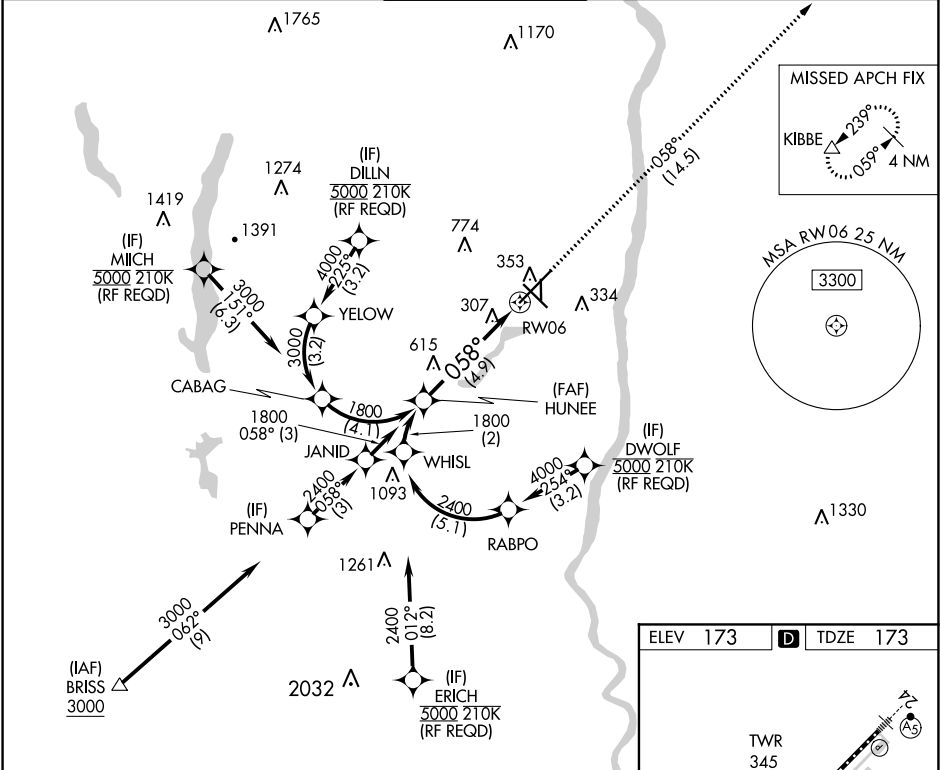
For uncompensated Baro-VNAV systems, procedure NA below -18°C (0°F) or above 54°C (130°F). GPS required. For inop ALS, increase RNP 0.11 all Cats visibility to RVR 5500 and RNP 0.30 all Cats visibility to 1 3⁄8 SM.

ALSF-2

MISSED APPROACH:

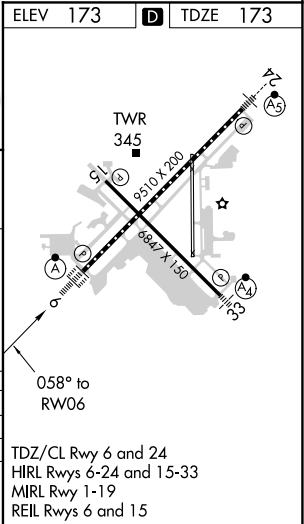
Climb to 3000 on track 058° to KIBBE and hold.

D-ATIS	YANKEE APP CON	BRADLEY TOWER	GND CON	CLNC DEL	CPDLC
118.15	123.95 290.55 (061°-240°) 125.35 281.5 (241°-060°)	120.3 351.8	121.9 348.6	121.75 322.3	



CATEGORY	A	B	C	D
RNP 0.11 DA		545/40	372 (400-3⁄4)	
RNP 0.30 DA		672-50	499 (500-1)	

AUTHORIZATION REQUIRED



TDZ/CL Rwy 6 and 24
HIRL Rws 6-24 and 15-33
MIRL Rwy 1-19
REIL Rws 6 and 15