

WAAS
CH **97310**
W24A

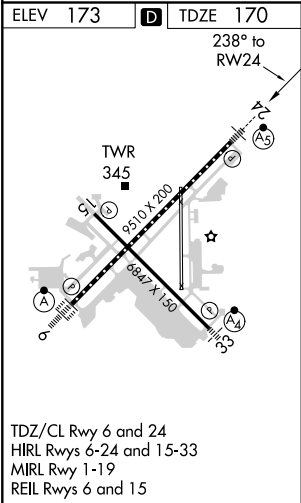
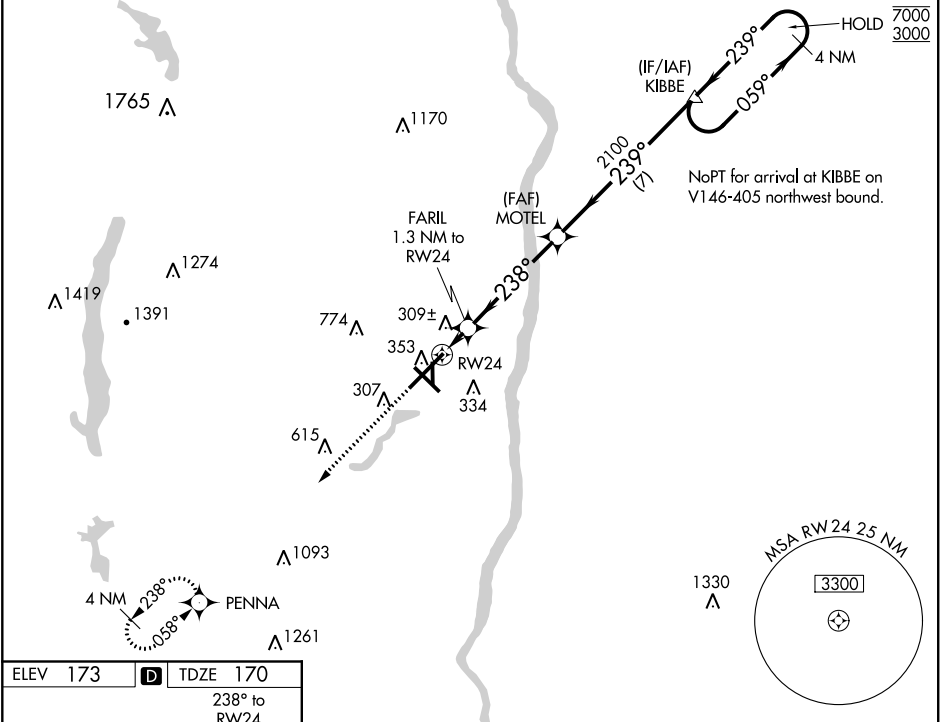
APP CRS
238°

Rwy Idg
TDZE **170**
Apt Elev **173**




RNAV (GPS) Y RWY 24

BRADLEY INTL (BDL)

RNP APCH.		MALSR		MISSED APPROACH: Climb to 3000 direct PENNA and hold.	
Circling Rwy 19 NA at night. For uncompensated Baro-VNAV systems, LNAV/VNAV NA below -18°C or above 54°C.					
D-ATIS 118.15	YANKEE APP CON 123.95 290.55 125.35 281.5 (061°-240°) (241°-060°)	BRADLEY TOWER 120.3 351.8	GND CON 121.9 348.6	CLNC DEL 121.75 322.3	CPDLC



TDZ/CL Rwy 6 and 24
HIRL Rwy 6-24 and 15-33
MIRL Rwy 1-19
REIL Rwy 6 and 15

3000 ↑		PENNA 	VGSI and RNAV glidepath not coincident (VGSI Angle 3.00/TCH 71).		KIBBE	4 NM Holding Pattern
*LNAV only.		FARIL 1.3 NM to RW24	MOTEL	2100	239°	059° → 7000 ← 239° 3000
		RW24	238°	*640	2100	GP 3.00° TCH 55
1.3		4.6 NM	7 NM			
CATEGORY	A		B	C	D	
LPV DA			370/18	200 (200-½)		
LNAV/ VNAV	DA		560/45	390 (400-¾)		
LNAV MDA		560/24	390 (400-½)	560/35	390 (400-¾)	
 CIRCLING		700-1	527 (600-1)	1120-2¾ 947 (1000-2¾)	1220-3 1047 (1100-3)	