
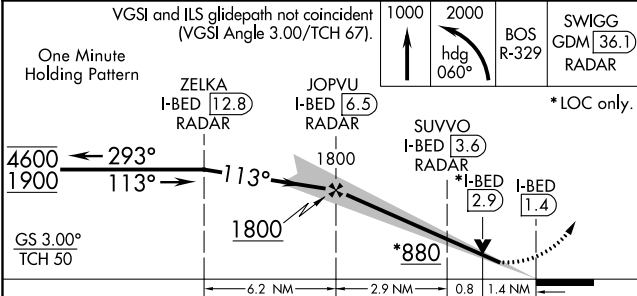
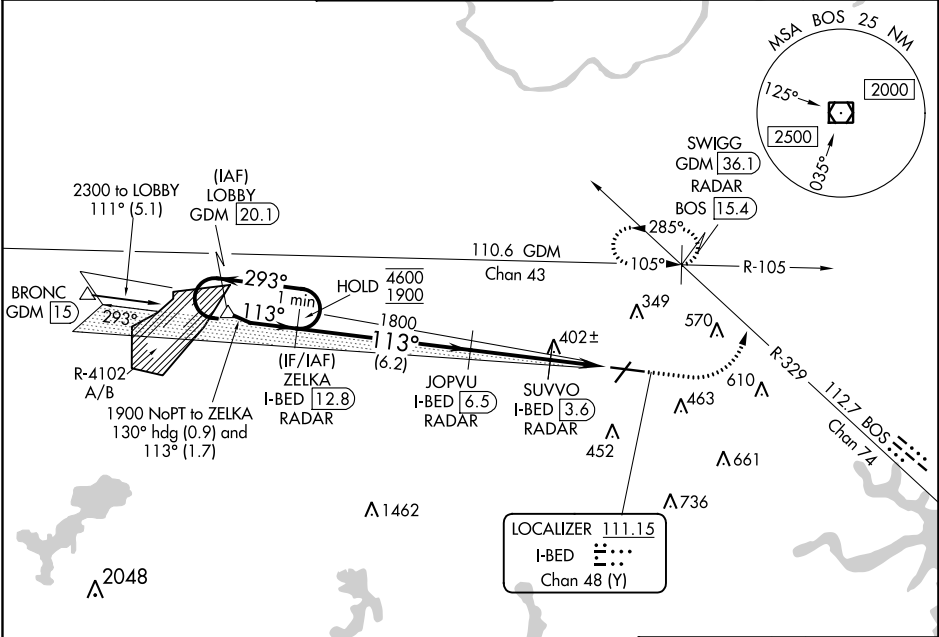


LOC/DME I-BED <b>111.15</b> Chan <b>48</b> (Y)	APP CRS <b>113°</b>	Rwy Idg <b>7011</b> TDZE <b>132</b> Apt Elev <b>132</b>
--	------------------------	---

ILS or LOC RWY 11  
LAURENCE G HANSCOM FIELD (BED)

RADAR required for procedure entry. DME or RADAR required.	MALSR 	MISSED APPROACH: Climb to 1000 then climbing left turn to 2000 on heading 060° and on BOS VOR/DME R-329 to SWIGG/GDM 36.1 DME/RADAR and hold, continue climb-in-hold to 2000.
---	--	---

ATIS <b>124.6</b>	BOSTON APP CON <b>124.4 279.6</b>	HANSCOM TOWER★ <b>118.5</b> (CTAF) <b>0 257.2</b>	GND CON <b>121.7</b>	CINC DEL <b>121.85</b>	UNICOM <b>122.95</b>
----------------------	--------------------------------------	--	-------------------------	---------------------------	-------------------------



CATEGORY	A	B	C	D
S-ILS 11	383/24 251 (300-½)			
S-LOC 11	660/24 528 (600-½)		660/55 528 (600-1)	
CIRCLING	720-1 588 (600-1)		880-2¼ 748 (800-2¼)	

ELEV 132

D

TDZE 132

113° 5.1 NM from FAF

NE-1, 31 DEC 2020 to 28 JAN 2021

NE-1, 31 DEC 2020 to 28 JAN 2021