

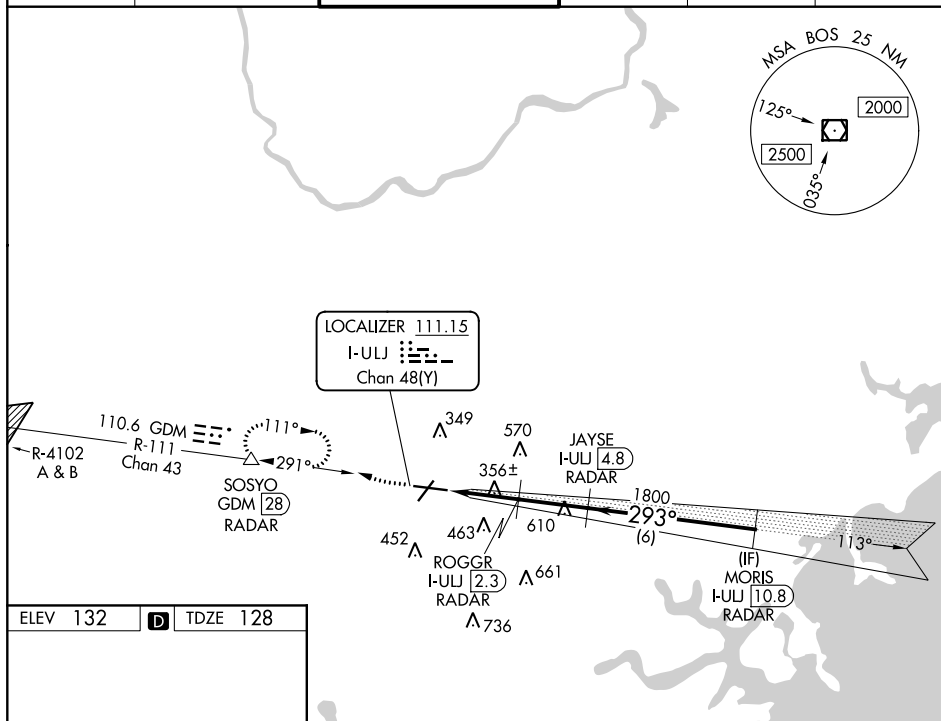
ILS or LOC RWY 29
LAURENCE G HANSCOM FIELD (BED)

MALSR

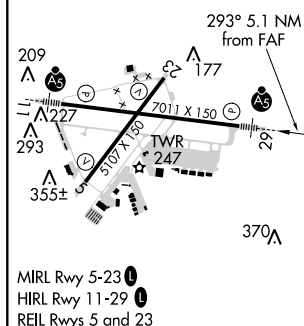


MISSED APPROACH: Climb to 1000 then climbing right turn to 2000 on GDM VOR/DME R-111 to SOSYO/GDM 28 DME/RADAR and hold.

ATIS 124.6	BOSTON APP CON 124.4 279.6	HANSCOM TOWER ★ 118.5 (CTAF) 0 257.2	GND CON 121.7	CLNC DEL 121.85	UNICOM 122.95
---------------	-------------------------------	---	------------------	--------------------	------------------



ELEV 132	D	TDZE 128
----------	----------	----------



MIRL Rwy 5-23 **L**
HIRL Rwy 11-29 **L**
REIL Rwy 5 and 23

FAF to MAP 5.1 NM					
Knots	60	90	120	150	180
Min:Sec	5:06	3:24	2:33	2:02	1:42

BEDFORD, MASSACHUSETTS

Amdt 9B 05DEC19

1000 ↑	2000 GDM R-111	SOSOYO △	ROGGR I-ULJ [2.3] RADAR JAYSE I-ULJ [4.8] RADAR MORIS I-ULJ [10.8] RADAR			
*LOC only.			I-ULJ DME ANTENNA I-ULJ [0.3] *I-ULJ [1.1] 1800 293° 1800 GS 3.00° TCH 55			
1.4 NM 1.2 NM 2.5 NM 6 NM						
CATEGORY	A		B	C	D	
S-ILS 29	328-1½ 200 (200-½)					
S-LOC 29	620-½ 492 (500-½)			620-1 492 (500-1)		
CIRCLING	720-1 588 (600-1)			880-2¼ 748 (800-2¼)		920-2½ 788 (800-2½)

LAURENCE G HANSCOM FIELD (BED)

ILS or LOC RWY 29

NE-1, 31 DEC 2020 to 28 JAN 2021

NE-1, 31 DEC 2020 to 28 JAN 2021