

APP CRS	Rwy Idg	5107
233°	TDZE	128
	Apt Elev	132

RNAV (GPS) RWY 23  
LAURENCE G HANSCOM FIELD (BED)

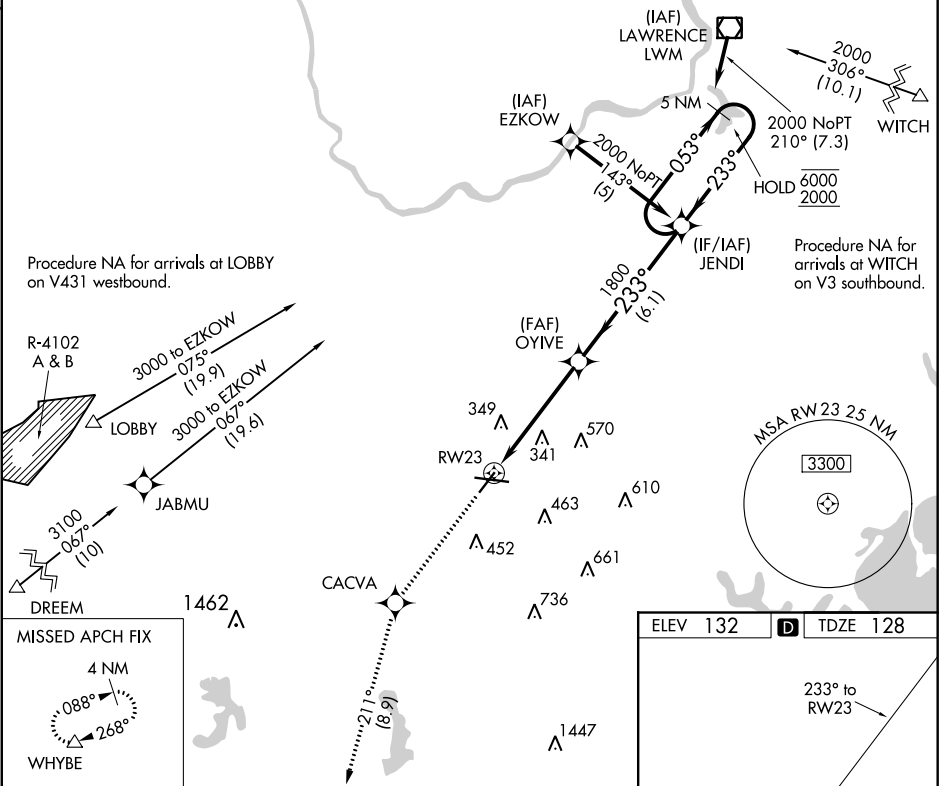
RNP APCH.

▼ Rwy 23 helicopter visibility reduction below ¾ SM NA. When local altimeter setting not received, use Boston altimeter setting and increase all MDAs 60 feet and LNAV Cats C and D ½ SM and Circling Cat D visibility ¼ SM.

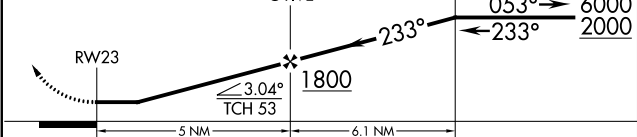
▲

MISSED APPROACH: Climb to 3000 direct CACVA and on track 211° to WHYBE and hold.

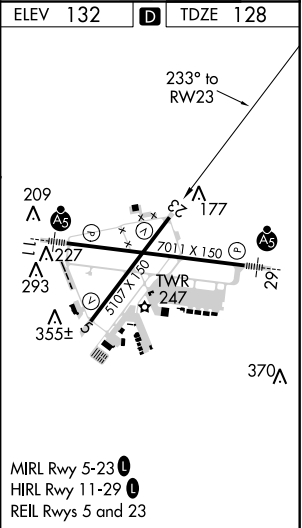
ATIS	BOSTON APP CON	HANSCOM TOWER ★	GND CON	CLNC DEL	UNICOM
124.6	124.4 279.6	118.5 (CTAF) 0 257.2	121.7	121.85	122.95



3000	CACVA	tr 211°	WHYBE	VGSI and descent angles not coincident (VGSI Angle 3.50/TCH 56).	5 NM Holding Pattern
↑	✧		△	JENDI	



CATEGORY	A	B	C	D
LNAV MDA	640-1 512 (600-1)		640-1½ 512 (600-1½)	
CIRCLING	720-1 588 (600-1)		880-2¼ 748 (800-2¼)	920-2½ 788 (800-2½)



NE-1, 31 DEC 2020 to 28 JAN 2021

NE-1, 31 DEC 2020 to 28 JAN 2021