

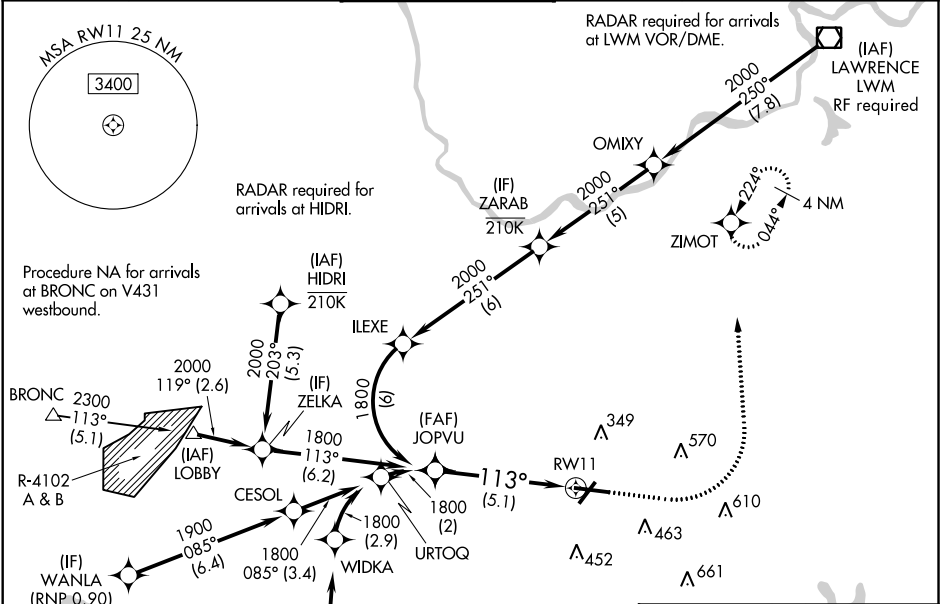
APP CRS 113°	Rwy Idg 7011 TDZE 132 Apt Elev 132	RNAV (RNP) Y RWY 11 LAURENCE G HANSCOM FIELD (BED)
------------------------	---	--

For uncompensated Baro-VNAV systems, procedure NA below -16°C (4°F) or above 54°C (130°F). GPS required.
For inop MALS, increase RNP 0.30 all Cats visibility to 1 1/2 .

MALS

MISSED APPROACH: Climb to 1000 then climbing left turn to 2000 direct ZIMOT and hold.

ATIS 124.6	BOSTON APP CON 124.4 279.6	HANSCOM TOWER ★ 118.5 (CTAF) 0 257.2	GND CON 121.7	CLNC DEL 121.85	UNICOM 122.95
----------------------	--------------------------------------	--	-------------------------	---------------------------	-------------------------



1000

2000

ZIMOT

VGSI and RNAV glidepath not coincident (VGSI Angle 3.00/TCH 67).

JOPVU 1800

1800

113°

RW11

GP 3.00° TCH 50

See Planview for multiple IF locations.

5.1 NM

<p>JOPVU 1800</p> <p>1800</p> <p>GP 3.00° TCH 50</p> <p>113°</p> <p>See Planview for multiple IF locations.</p> <p>RW11</p> <p>5.1 NM</p> <p>CATEGORY</p> <p>RNP 0.30 DA</p>					<p>VGSI and RNAV glidepath not coincident (VGSI Angle 3.00/TCH 67).</p> <p>1000</p> <p>2000</p> <p>ZIMOT</p> <p>RW11</p> <p>209</p> <p>177</p> <p>227</p> <p>293</p> <p>355±</p> <p>510 X 50</p> <p>7011 X 150</p> <p>TWR 247</p> <p>370</p>				
<p>AUTHORIZATION REQUIRED</p>									
<p>MIRL Rwy 5-23</p> <p>HIRL Rwy 11-29</p> <p>REIL Rws 5 and 23</p>									