

WAAS CH 87000 W11A	APP CRS 113°	Rwy Idg TDZE 132 Apt Elev 132	7011
--	------------------------	---	-------------

RNAV (GPS) Z RWY 11

LAURENCE G HANSCOM FIELD (BED)

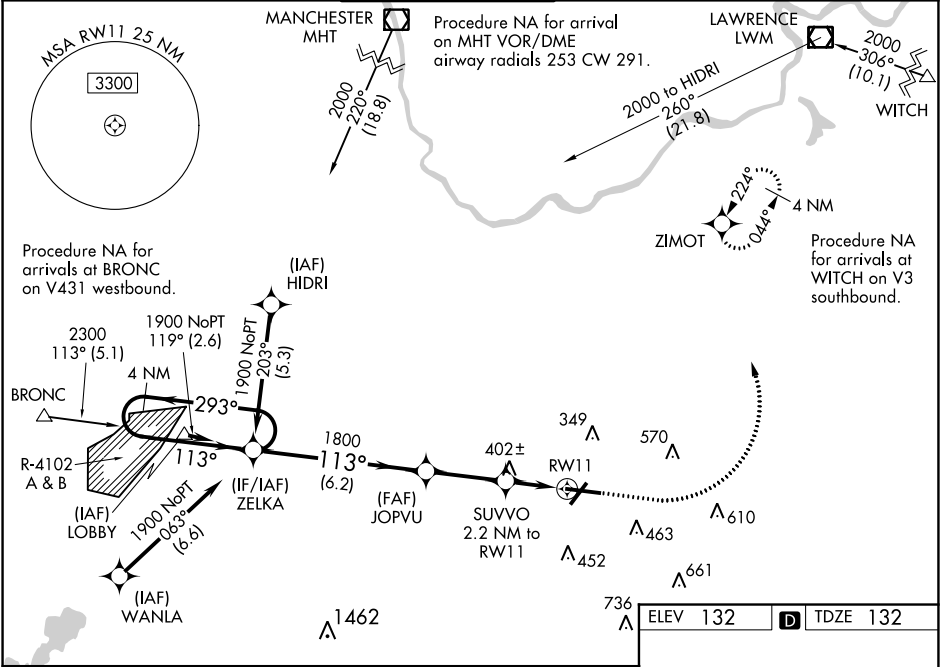
RNP APCH

For uncompensated Baro-VNAV systems, LNAV/VNAV NA below -16°C (4°F) or above 54°C (130°F). When local altimeter setting not received, use Boston altimeter setting: increase LPV DA to 431 feet, LNAV/VNAV DA to 523 feet; increase all MDAs 60 feet and LNAV Cats C and D and Circling Cat D visibility ½ SM. Baro-VNAV and VDP NA with Boston altimeter setting. Inop table does not apply to LPV all Cats. For inop ALS when using Boston altimeter setting, increase LPV visibility to RVR 4500 and LNAV/VNAV to RVR 6000.

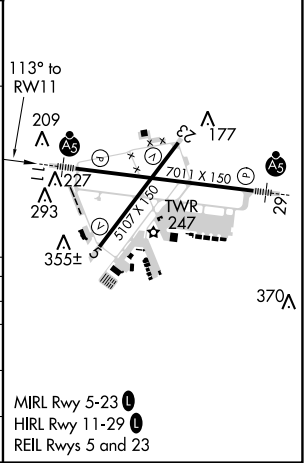
MALSR

MISSED APPROACH:
Climb to 1000 then climbing left turn to 2000 direct ZIMOT and hold.

ATIS 124.6	BOSTON APP CON 124.4 279.6	HANSCOM TOWER★ 118.5 (CTAF) 0 257.2	GND CON 121.7	CLNC DEL 121.85	UNICOM 122.95
----------------------	--------------------------------------	---	-------------------------	---------------------------	-------------------------



VGSI and RNAV glidepath not coincident (VGSI Angle 3.00/TCH 67).				
1000 2000 ZIMOT				
4 NM Holding Pattern				
ZELKA				
JOPVU				
SUVVO 2.2 NM to RW11				
*LNAV only.				
1900 ← 293° 113° →				
GP 3.00° TCH 50				
1800				
*880				
6.2 NM 2.9 NM 0.7 1.5 NM				
CATEGORY	A	B	C	D
LPV DA	382/40		250 (300-¾)	
LNAV/VNAV DA	474/40		342 (400-¾)	
LNAV MDA	660/24	528 (600-½)	660/55	528 (600-1)
CIRCLING	720-1	588 (600-1)	880-2¼ 748 (800-2¼)	920-2½ 788 (800-2½)



NE-1, 31 DEC 2020 to 28 JAN 2021

NE-1, 31 DEC 2020 to 28 JAN 2021