


ILS or LOC RWY 5  
NEW BEDFORD RGNI (EWB)

 <p>MALSR</p>	<p><b>MISSED APPROACH:</b> Climb to 800 then climbing left turn to 2100 on heading 210° and on I-EWB localizer SW course R-234 to BONNI INT/I-EWB 11.4 DME and hold.</p>
--	--

IAF  
PROVIDENCE  
115.6 PVD  
Chan 103

LOCALIZER 109.7  
I-EWB  
Chan 34

WIDON A 322  
I-EWB 3

261± A 140±  
A 315  
A 263  
A 577  
609 A

PROLY INT  
I-EWB 5.3

A 1048

1500  
054°  
101°

(IF/IAF)  
BONNI INT  
I-EWB 11.4

054°  
1 min  
234°

R-058

117.8 SEY  
Chan 125

2100  
306°  
(24)

MARTHAS VINEYARD  
114.5 MYY  
Chan 92

MSA PVD 25 NM  
2600

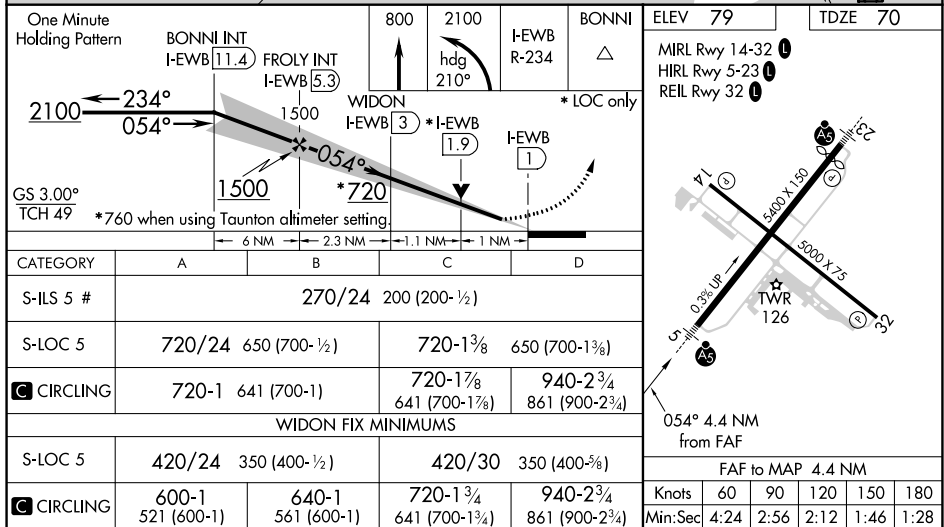
2100 NoPT  
142°  
(18.4)

R-124

R-142

A 872

A 552



NE-1 31 DEC 2020 to 28 JAN 2021