

APP CRS  
**333°**

Rwy Idg  
TDZE  
Apt Elev

**5000**  
**999**  
**1009**

**RNAV (GPS) RWY 33**

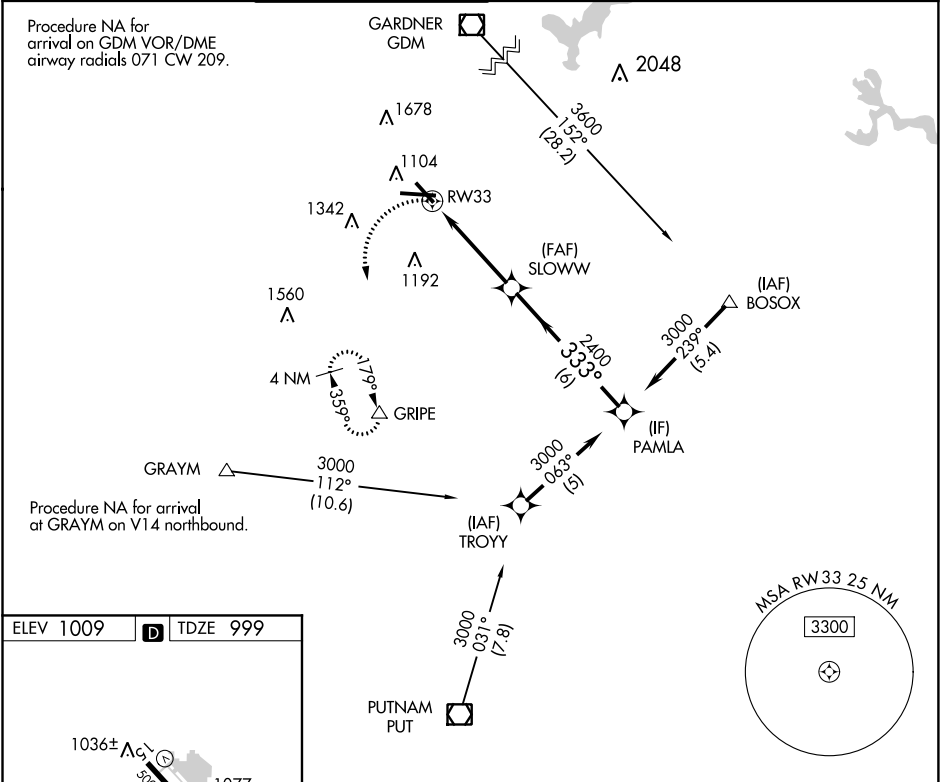
WORCESTER RGNL (ORH)

RNP APCH.

When local altimeter setting not received, use Bedford altimeter setting and increase all MDAs 200 feet and visibility LNAV Cat C/D ½ SM and visibility Circling Cat B ¼ SM. VDP NA with Bedford altimeter setting.

MISSED APPROACH:  
Climbing left turn to 3000 direct GRIPE and hold.

ATIS	YANKEE APP CON	WORCESTER TOWER★	GND CON	CLNC DEL	CLNC DEL	UNICOM
126.55	119.0 327.1	120.5 (CTAF) 0 263.0	123.85	128.65	119.0 (When twr closed)	122.95



ELEV 1009

D

TDZE 999

TDZ/CL Rwy 11  
REIL Rwy 15, 29 and 33  
HIRL Rwy 11-29  
MIRL Rwy 15-33

3000	GRIPE	Procedure Turn NA
3000	SLOWW	PAMLA
1.1 NM to RW33	3.03° TCH 40	6 NM

CATEGORY	A	B	C	D
LNAV MDA	1480-1	482 (500-1)	1480 -1⅓ 482 (500-1⅓)	
CIRCLING	1560-1 551 (600-1)	1720-1 711 (800-1)	2000-3	991 (1000-3)