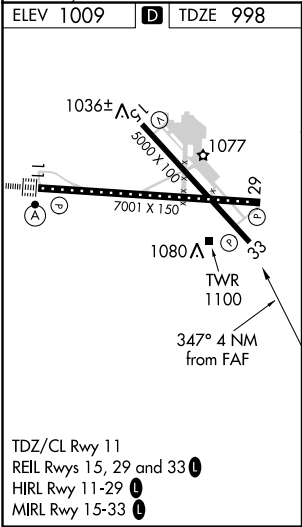
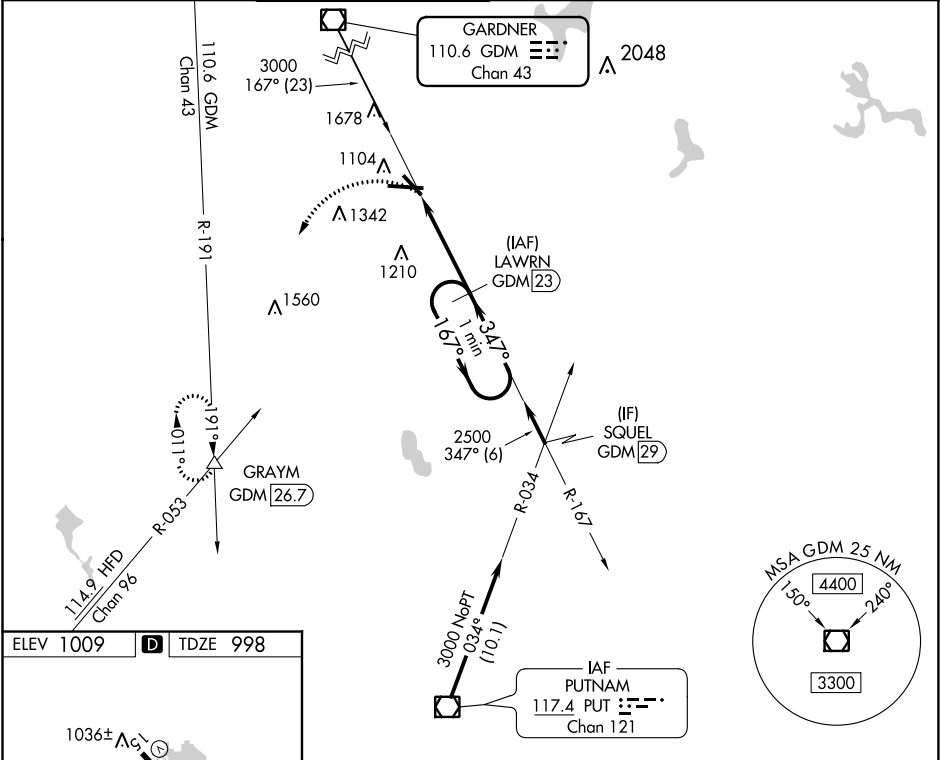


VOR/DME GDM	APP CRS	Rwy Idg	5000
110.6	347°	TDZE	998
Chan 43		Apt Elev	1009

VOR/DME RWY 33

WORCESTER RGNL (ORH)

<div>⚠</div> <div>When local altimeter setting not received, Bedford altimeter setting and increase all MDAs 200 feet; increase S-33 Cat C/D visibility ½ SM and Circling Cat B ¼ SM.</div>		<div>⚠ MISSED APPROACH: Climbing left turn to 3000 on heading 240° and GDM VOR/DME R-191 to GRAYM INT/GDM 26.7 DME and hold.</div>				
ATIS	YANKEE APP CON	WORCESTER TOWER ★	GND CON	CLNC DEL	CLNC DEL	UNICOM
126.55	119.0 327.1	120.5 (CTAF) 263.0	123.85	128.65	119.0 (When twr closed)	122.95



<div>3000</div> <div>hdg 240°</div>		<div>GRAYM</div> <div>△</div>		<div>VGSI and descent angles not coincident (VGSI Angle 3.00/TCH 40).</div>	
<div>GDM R-191</div>		<div>LAWNRN GDM 23</div>		<div>One Minute Holding Pattern</div>	
<div>GDM 19</div>		<div>2500</div>		<div>2700</div>	
<div>347°</div>		<div>167°</div>		<div>347°</div>	
<div>3.45° TCH 40</div>		<div>4 NM</div>			
CATEGORY	A	B	C	D	
S-33	1520-1	522 (600-1)	1520-1½	522 (600-1½)	
CIRCLING	1560-1 551 (600-1)	1720-1 711 (800-1)	2000-3	991 (1000-3)	