

NE-1, 31 DEC 2020 to 28 JAN 2021

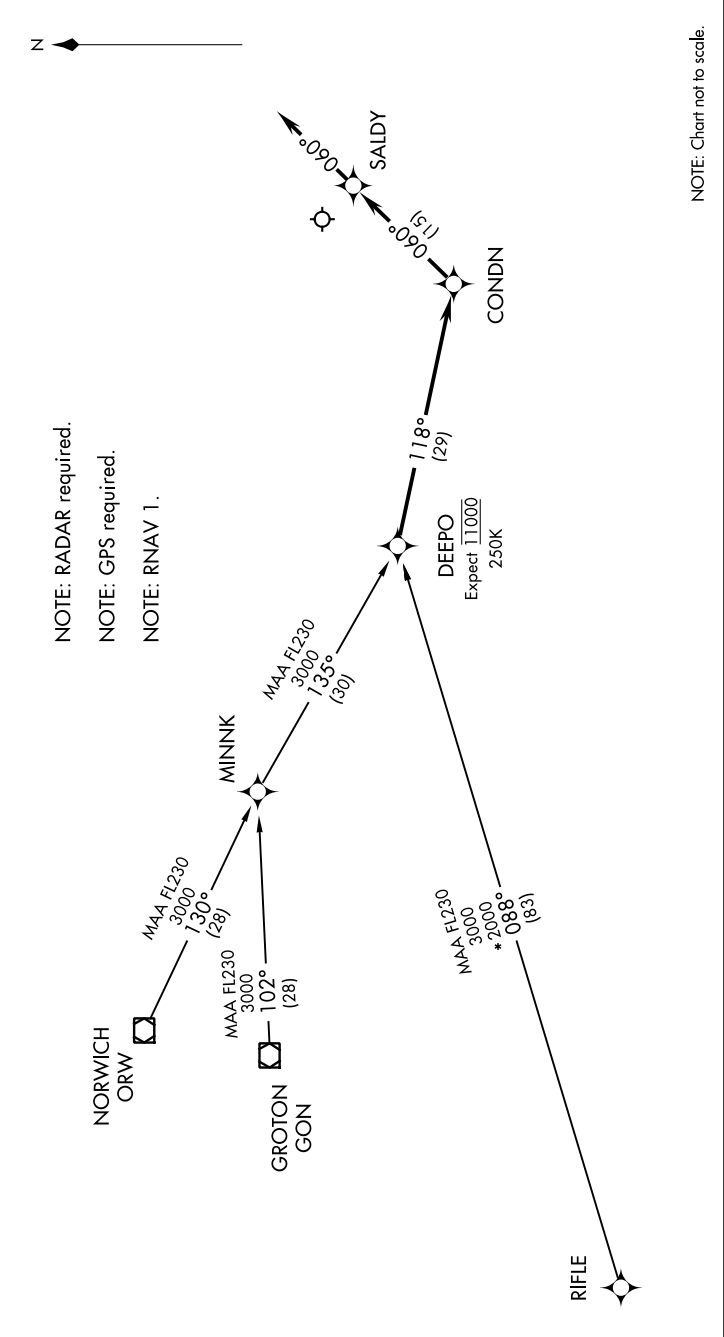
BOSTON APP CON ★
133.75 318.1
ATIS
127.5
NANTUCKET TOWER ★
118.3 (CTAF)

GROTON TRANSITION (GON.DEEPO1)

NORWICH TRANSITION (ORW.DEEPO1)

RIFLE TRANSITION (RIFLE.DEEPO1)

... From DEEPO, via 118° track to COND; thence via 060° track to SALDY. Depart SALDY heading 060°, expect radar vectors to final approach course.



NE-1, 31 DEC 2020 to 28 JAN 2021