

LOC/DME I-MVY	APP CRS	Rwy Idg	5504
108.7	236°	TDZE	63
Chan 24		Apt Elev	67

ILS or LOC RWY 24
MARTHA'S VINEYARD (MVY)

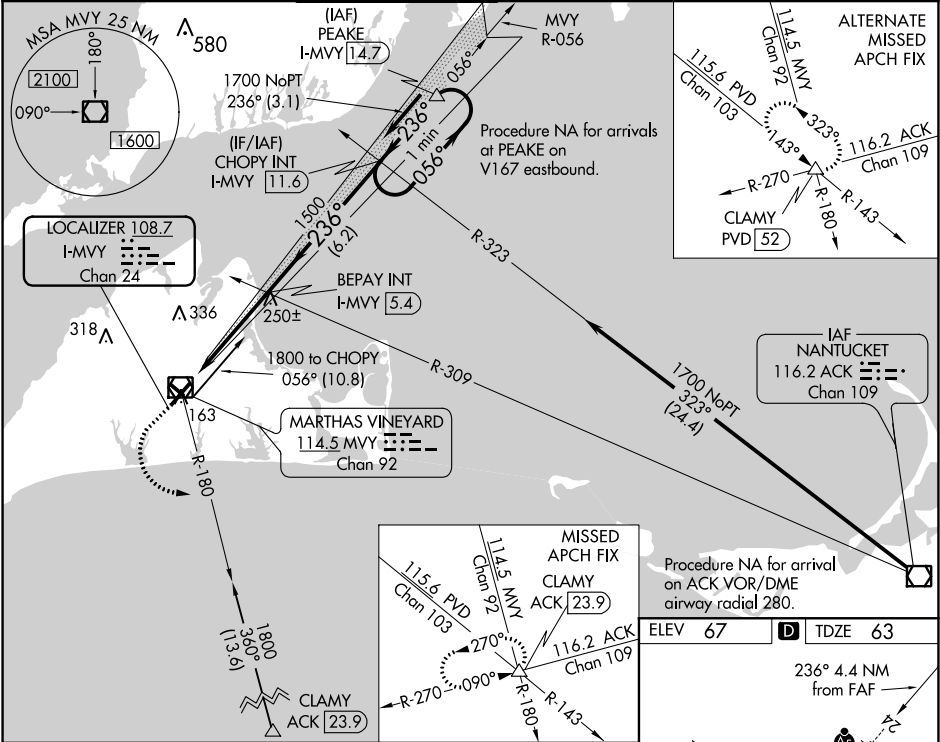
V VDP NA with Hyannis altimeter setting. When local altimeter setting not received, use Hyannis altimeter setting and increase all DA to 317 feet and all MDA 60 feet; increase S-LOC Cats C and D visibility to RVR 5000, Circling Cat C and D visibility 1/4 SM.

A For inoperative MALS R when using Hyannis altimeter setting, increase S-LOC Cats C and D visibility to 1 3/8 mile. Circling Rwy 15 NA at night. ** RVR 1800 authorized with use of FD or AP or HUD to DA (NA when using Hyannis altimeter setting).

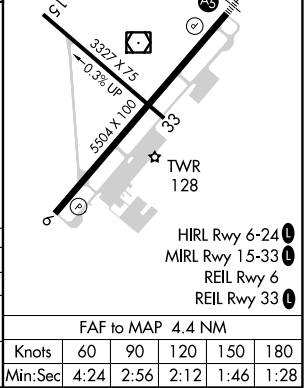
MALS R

MISSED APPROACH:
Climb to 800 then climbing left turn to 2500 on MVY VOR/DME R-180 to CLAMY INT/ACK 23.9 DME and hold.

ATIS 126.25	BOSTON APP CON * 119.7	VINEYARD TOWER * 121.4 (CTAF) 0	GND CON 124.35	CLNC DEL 124.35	CLNC DEL 119.7 (When twr closed)	UNICOM 122.95
----------------	---------------------------	------------------------------------	-------------------	--------------------	--	------------------



800	2500	CLAMY	Use I-MVY DME when on the localizer course.			
MVY R-180			BEPAV INT I-MVY 5.4	CHOPY INT I-MVY 11.6	One Minute Holding Pattern	
*LOC only	I-MVY 1	*I-MVY 2.3	1500	1500	056°	1700
					236°	236°
	1.2 NM	3.2 NM	6.2 NM			
CATEGORY	A	B	C	D		
S-ILS 24**	263/24 200 (200-1/2)					
S-LOC 24	500/24 437 (500-1/2)		500/40 437 (500-3/4)			
CIRCLING	500-1 433 (500-1)	540-1 473 (500-1)	700-1 3/4 633 (700-1 3/4)	780-2 1/4 713 (800-2 1/4)		



NE-1, 31 DEC 2020 to 28 JAN 2021

NE-1, 31 DEC 2020 to 28 JAN 2021