

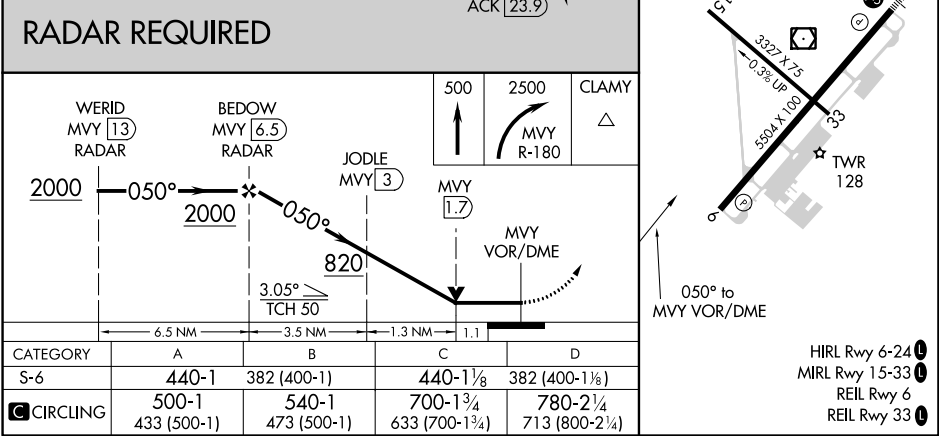
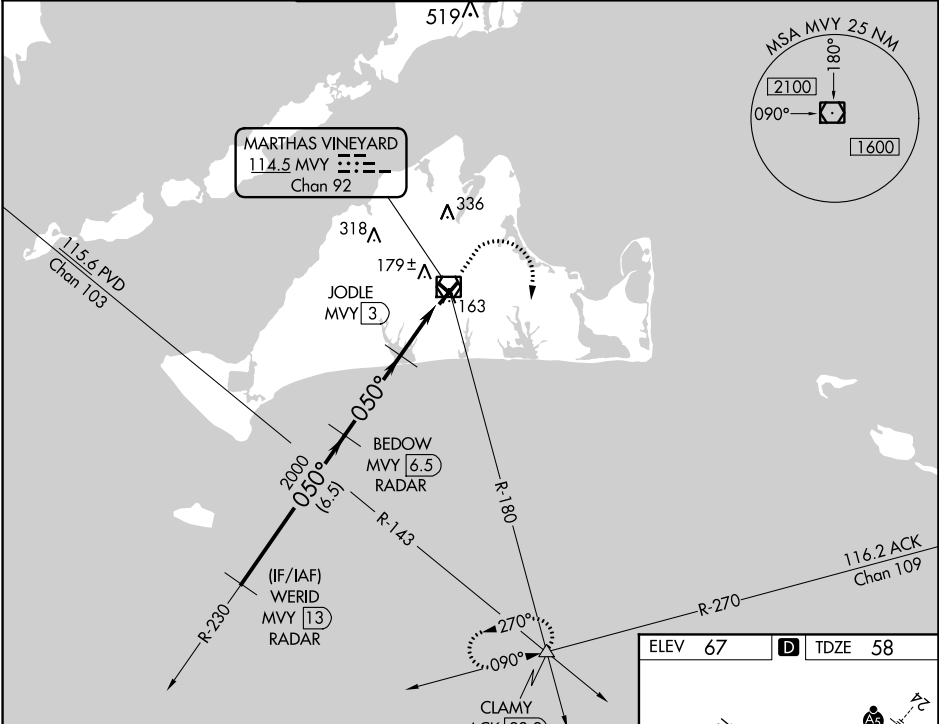
VOR/DME MVY	APP CRS	Rwy Idg	5504
114.5	050°	TDZE	58
Chan 92		Apt Elev	67

VOR RWY 6  
MARTHA'S VINEYARD (MVY)

▼ DME required. Rwy 6 helicopter visibility reduction below ¾ SM NA.  
VDP NA with Hyannis altimeter setting. When local altimeter setting not received, use Hyannis altimeter setting and increase all MDA 60 feet;  
▲ increase S-6 Cats C and D visibility ¼ mile. Night landing: Rwy 15 NA.

MISSED APPROACH: Climb to 500 then climbing right turn to 2500 via MVY VOR/DME R-180 to CLAMY INT/ACK 23.9 DME and hold.

ATIS	BOSTON APP CON *	VINEYARD TOWER *	GND CON	CLNC DEL	CLNC DEL	UNICOM
126.25	119.7	121.4 (CTAF) 0	124.35	124.35	119.7 (When twr closed)	122.95



NE-1, 31 DEC 2020 to 28 JAN 2021

NE-1, 31 DEC 2020 to 28 JAN 2021