

LOC I-EN	APP CRS	Rwy Idg	6201
108.9	018°	TDZE	488
		Apt Elev	488

ILS or LOC RWY 2  
DILLANT-HOPKINS (EEN)

**NA**

**-20°C**

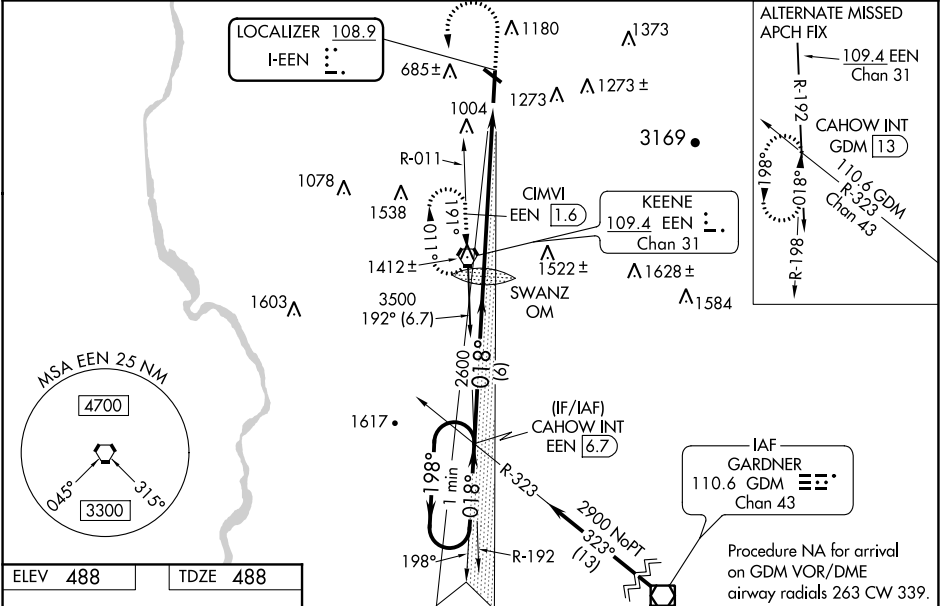
When local altimeter setting not received, use Orange altimeter setting: increase S-ILS 2 DA to 914 and all MDAs 60 feet; increase CIMVI fix minimums visibility S-LOC Cats C and D ¼ SM. For inoperative ALS when using Orange altimeter setting, increase S-ILS all Cats visibility to 1½ SM and increase S-LOC Cat B visibility to 1½ SM. Inoperative table does not apply to S-LOC Cat A. For inoperative ALS, increase S-LOC Cat B visibility to 1½ SM. CIMVI FIX minimums inoperative table does not apply to S-LOC Cat A. For inoperative ALS when using CIMVI FIX minimums, increase S-LOC Cat B visibility to 1¼ SM. CIMVI FIX minimums for inoperative ALS when using Orange altimeter setting, increase S-LOC Cat B visibility to 1¼ SM. Rwy 2 helicopter visibility reduction below ¾ SM NA. Circling Rwy 20, 32 NA at night.

**MALSR**

**AS**

**MISSED APPROACH:**  
Climb to 1600 then climbing left turn to 3000 direct EEN VORTAC and hold.

AWOS-3PT	BOSTON CENTER	UNICOM
119.025	123.75 338.2	123.0 (CTAF) 1



ELEV 488	TDZE 488
----------	----------

REIL Rwy 14 and 32  
HIRL Rwy 2-20  
MIRL Rwy 14-32

FAF to MAP 6.3 NM

Knots	60	90	120	150	180
Min:Sec	6:18	4:12	3:09	2:31	2:06

One Minute Holding Pattern			
CAHOW INT			
*1920 when using Orange altimeter setting.			
SWANZ OM			
2900 ← 198° → 018° → 018° → 2574 CIMVI EEN 1.6			
GS 3.00° TCH 43			
VGSi and ILS glidepath not coincident (VGSI Angle 3.00/TCH 39).			
6 NM 2.2 NM 4.1 NM			
CATEGORY	A	B	C
S-ILS 2	859-1 371 (400-1)		
S-LOC 2	1860-1¼	1372 (1400-1¼)	1860-2½ 1372 (1400-2½)
CIRCLING	1860-1¼ 1372 (1400-1¼)	1860-1½ 1372 (1400-1½)	1860-3 1372 (1400-3)
CIMVI FIX MINIMUMS			
S-LOC 2	1260-1	772 (800-1)	1260-1¾ 772 (800-1¾)
CIRCLING	1380-1¼ 892 (900-1¼)	1500-1½ 1012 (1100-1½)	1500-3 1012 (1100-3)

NE-1, 31 DEC 2020 to 28 JAN 2021

NE-1, 31 DEC 2020 to 28 JAN 2021