

VORTAC EEN	APP CRS	Rwy Idg	6201
109.4	024°	TDZE	488
Chan 31		Apt Elev	488

VOR RWY 2

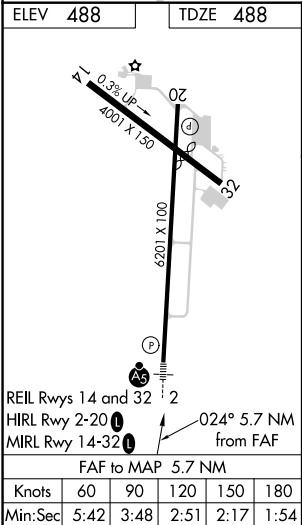
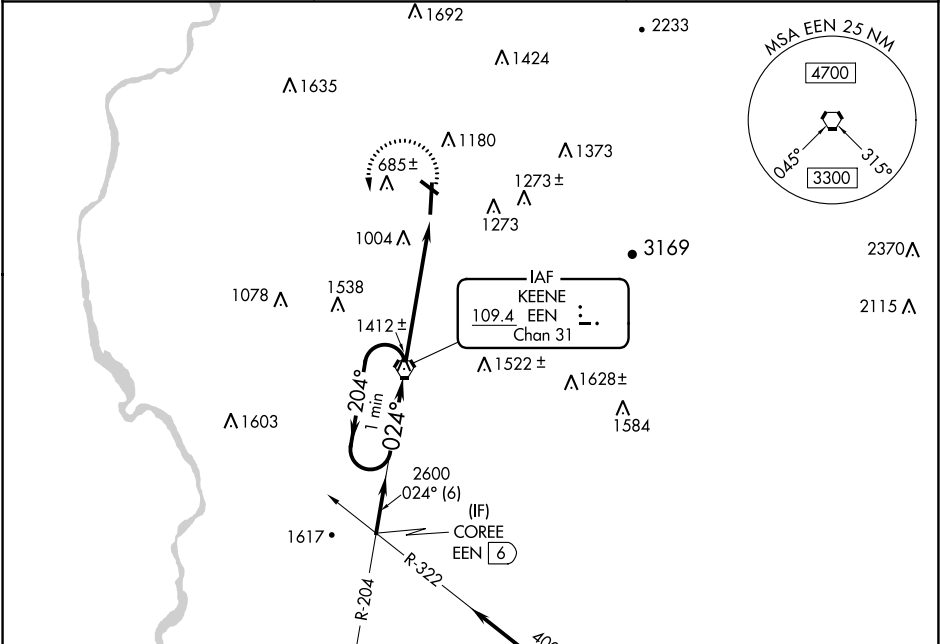
DILLANT-HOPKINS (EEN)

Inoperative table does not apply. When local altimeter not received, use Orange altimeter setting and increase all MDAs 60 feet. Circling Rwy 20, 32 NA at night. Rwy 2 helicopter visibility reduction below ¾ SM NA.

MALSR

MISSED APPROACH: Climbing left turn to 2900 direct EEN VORTAC and hold.

AWOS-3PT	BOSTON CENTER	UNICOM
119.025	123.75 338.2	123.0 (CTAF) 0



One Minute Holding Pattern				
VGSI and descent angles not coincident (VGSI Angle 3.00/TCH 39).				
2900 ← 204° 024° → 2600 024° 3.43° TCH 50 5.7 NM				
CATEGORY	A	B	C	D
S-2	2100-1¼ 1612 (1700-1¼)	2100-1½ 1612 (1700-1½)	2100-3	1612 (1700-3)
CIRCLING	2100-1¼ 1612 (1700-1¼)	2100-1½ 1612 (1700-1½)	2100-3	1612 (1700-3)