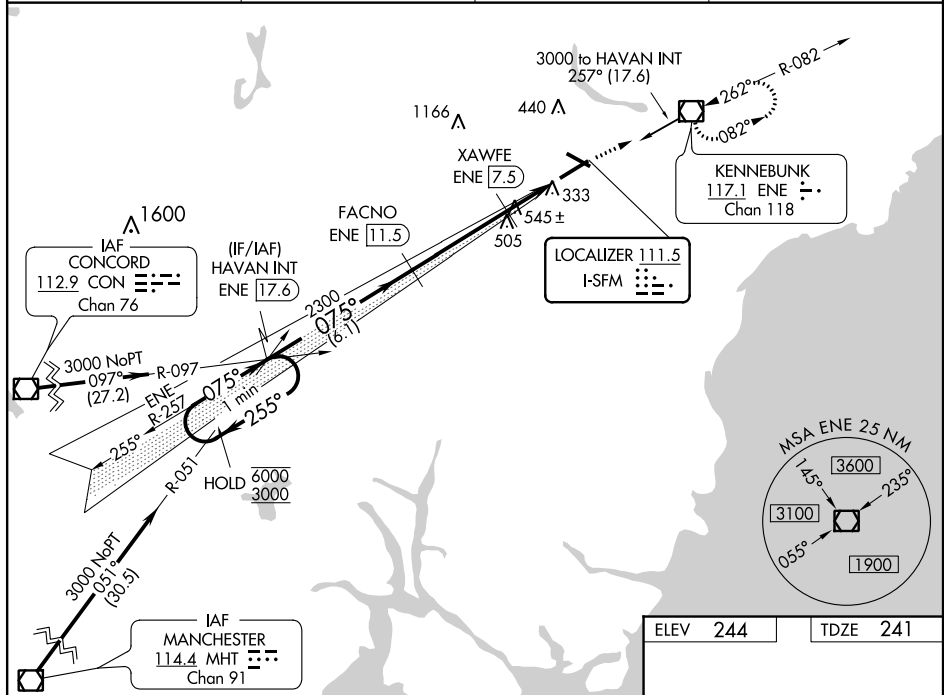


ILS or LOC RWY 7  
SANFORD SEACOAST RGNL (SFM)

**T** Rwy 7 helicopter visibility reduction below  $\frac{3}{4}$  SM NA.  
**A** NA DME from ENE VOR/DME.  
 Simultaneous reception of I-SFM and ENE DME required.

**MISSED APPROACH:** Climb to 2500 direct ENE VOR/DME and hold, continue climb-in-hold to 2500.

AWOS-3PT <b>120.025</b>	PORTLAND APP CON ★ <b>119.75 269.35</b>	CLNC DEL <b>121.725</b>	UNICOM <b>123.075 (CTAF) 0</b>
----------------------------	--	----------------------------	-----------------------------------



NE-1, 31 DEC 2020 to 28 JAN 2021

One Minute Holding Pattern

VGS and ILS glidepath not coincident (VGS Angle 3.00/TCH 53).

HAVAN INT ENE 17.6

FACNO ENE 11.5

XAWFE ENE 7.5

ENE 6.8

ENE 5.2

\*LOC only.

6000 ← 255°

3000 → 075°

GS 3.00° TCH 56

2300

\*960

6.1 NM

4 NM

0.7 NM

1.6

CATEGORY	A	B	C	D
S-ILS 7	441-3/4 200 (200-3/4)			
S-LOC 7	800-1	559 (600-1)	800-1 5/8	559 (600-1 5/8)
<b>C</b> CIRCLING	800-1	556 (600-1)	1180-2 3/4 936 (1000-2 3/4)	1240-3 996 (1000-3)

