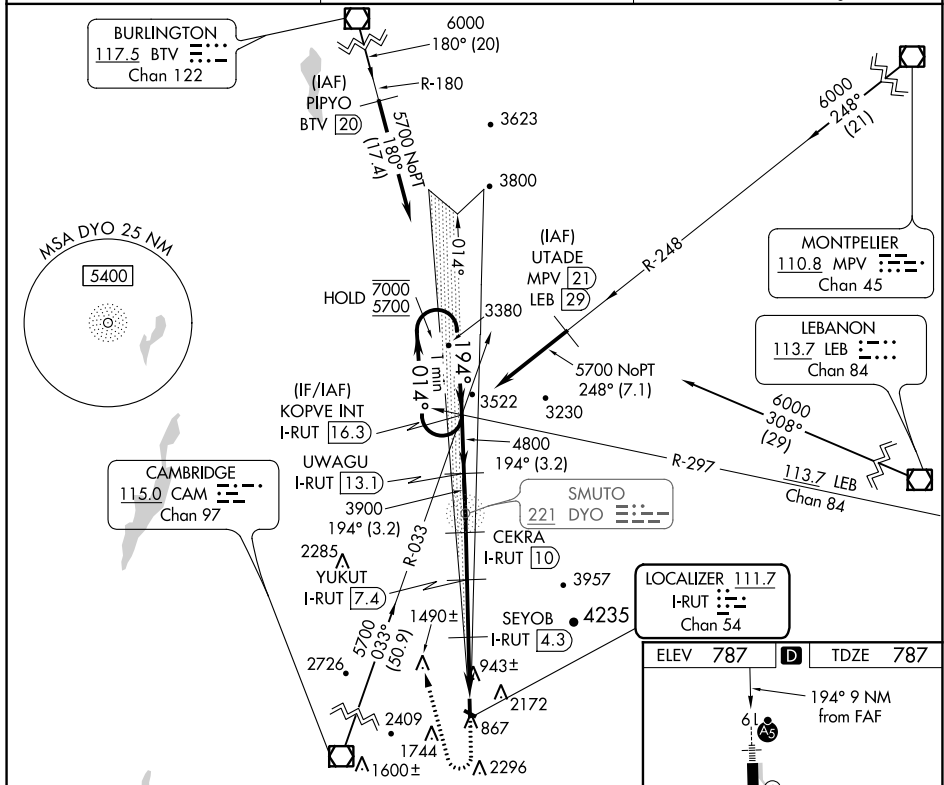


ILS Z or LOC Z RWY 19
RUTLAND-SOUTHERN VERMONT RGNL (RUT)

MISSED APPROACH: Climb to 1900 then climbing right turn to 5700 on heading 360° and CAM VOR/DME R-033 to KOPVE INT/I-RUT 16.31 DME and hold. # Missed approach requires minimum climb of 425 feet per NM to 3200; if unable to meet climb gradient, see ILS Y or LOC Y Rwy 19.

T Circling to Rwy 13, 31 NA at night. Circling NA
A northeast of Rwy 19 and 31. For inop ALS,
☖ -4°C increase S-ILS 19 visibility all Cats to 1½ SM,
 and increase S-LOC 19 Cat C/D visibility to 2 SM.

AWOS-3PT 118.375	BOSTON CENTER 135.7 282.2	UNICOM 122.8 (CTAF) 0
----------------------------	-------------------------------------	---------------------------------



One Minute Holding Pattern

KOPVE INT
I-RUT 16.3 UWAGU
I-RUT 13.1 CEKRA
I-RUT 10 YUKUT
I-RUT 7.4 SEYOB
I-RUT 4.3
I-RUT 0.9

7000 ← 014°
5700 194° → 194°

GS 320°
TCH 54

3.2 NM 3.2 NM 2.5 NM 3.1 NM 2.3 NM 1.1 NM

*LOC only

S-ILS 19 # 1451-1½ 664 (700-1½)

S-LOC 19 # 1520-½ 733 (800-½) 1520-1½ 733 (800-1½)

CIRCLING 2160-1¼ 1373 (1400-1¼) 2160-1½ 1373 (1400-1½) 2520-3 1733 (1800-3) 2760-3 1973 (2000-3)

