

WAAS  
CH **86305**  
**W22A**

APP CRS  
**224°**

Rwy Idg  
TDZE **83**  
Apt Elev **83**

**RNAV (GPS) RWY 22**

HANCOCK COUNTY-BAR HARBOR (BHB)

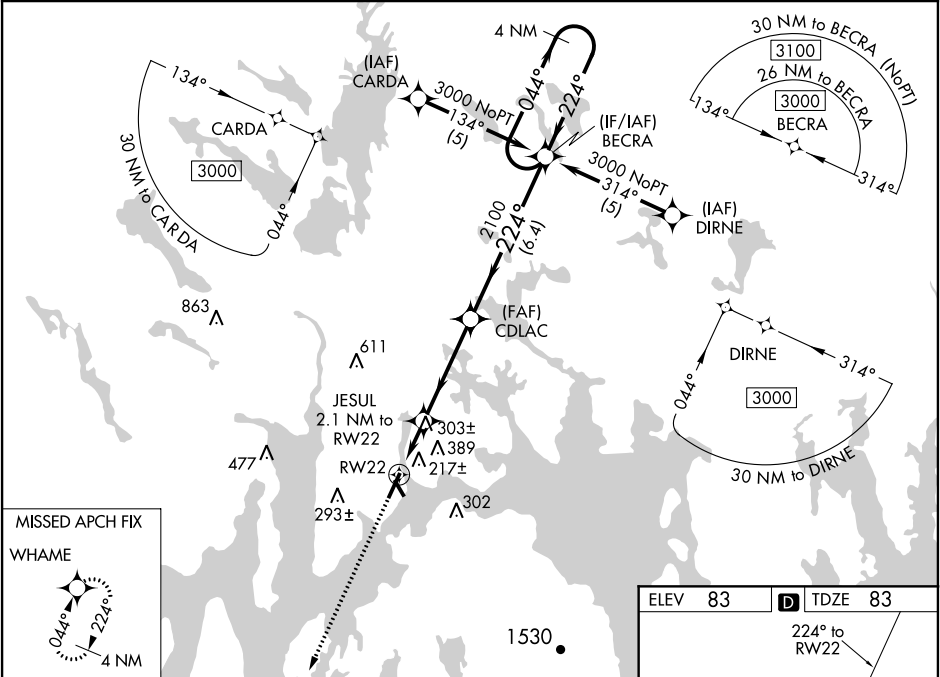
Baro-VNAV NA when using Bangor altimeter setting. DME/DME RNP-0.3 NA. When local altimeter setting not received, use Bangor altimeter setting and increase all DA 83 feet and all MDA 100 feet; increase LPV all Cats and LNAV/VNAV all Cats and LNAV Cats C/D and Circling Cats C/D visibilities ¼ mile. VDP NA with Bangor altimeter setting. Inoperative table does not apply to LNAV/VNAV all Cats and LNAV Cat C. When using Bangor altimeter setting, inoperative table does not apply to LNAV/VNAV all Cats and LNAV Cat C. For uncompensated Baro-VNAV systems, LNAV/VNAV NA below -15°C (5°F) or above 49°C (120°F). Circling to Rwy 17 NA at night.

MALSF

MISSED APPROACH:

Climb to 2900 direct WHAME and hold.

AWOS-3PT <b>118.35</b>	BANGOR APP CON <b>133.6 284.65</b>	CLNC DEL <b>119.9</b>	UNICOM <b>123.0</b> (CTAF)	<b>122.70</b>
---------------------------	---------------------------------------	--------------------------	-------------------------------	---------------



2900

WHAME

\*LNAV only.

JESUL 2.1 NM to RW22

CDLAC 2100

BECRA 4 NM Holding Pattern

RW22 780\*

2100

3000

GP 3.00°

TCH 51

VGSi and RNAV glidepath not coincident (VGSi Angle 3.00/TCH 55).

CATEGORY	A	B	C	D
LPV DA		283-¾	200 (200-¾)	
LNAV/VNAV DA		697-2¼	614 (700-2¼)	
LNAV MDA	580-¾ 497 (500-¾)	580-1¼ 497 (500-1¼)	580-1½ 497 (500-1½)	
CIRCLING	600-1 517 (600-1)	620-1 537 (600-1)	700-1¾ 617 (700-1¾)	700-2 617 (700-2)

