

LOC/DME I-RMZ	APP CRS	Rwy Idg	5012
111.7	129°	TDZE	54
Chan 54		Apt Elev	55

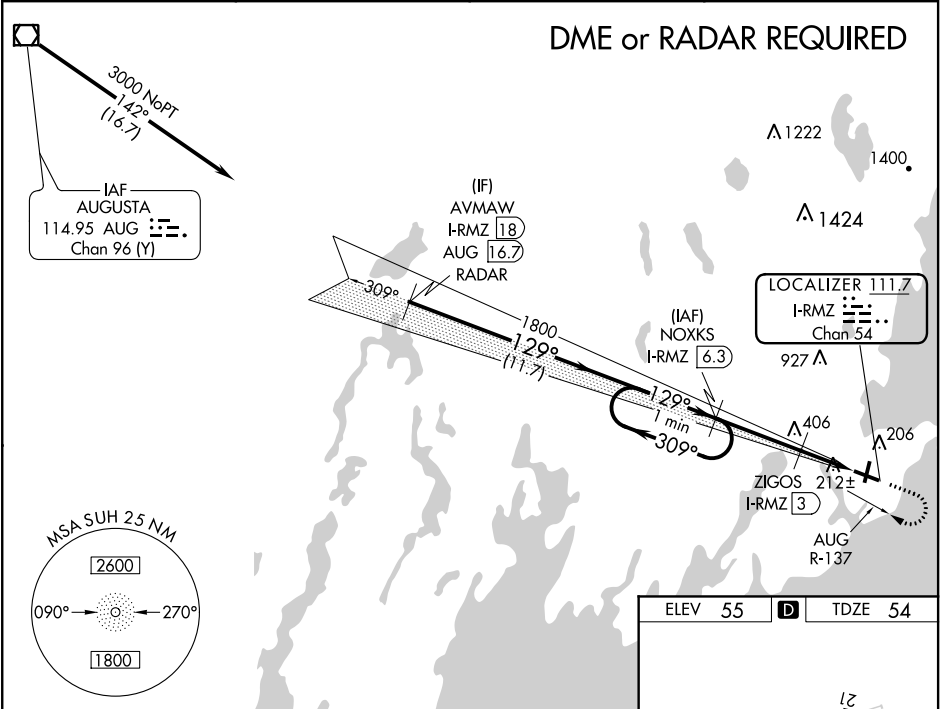
ILS or LOC RWY 13
KNOX COUNTY RGNL (RKD)

⚠ DME required. VDP NA when using Wiscasset altimeter setting. When local altimeter setting not received, use Wiscasset altimeter setting and increase all DA to 319 feet and all MDA 80 feet, increase S-LOC 13 Cats C/D visibility ¾ SM and Circling Cat C ½ SM. For inop ALS when using Wiscasset altimeter setting increase S-ILS 13 all Cats visibility to ¾ SM and S-LOC 13 Cats C/D to 1 ¾ SM.

MALSR

MISSED APPROACH: Climb to 700 then climbing right turn to 2000 on heading 348° and on AUG R-137 to NOXKS/I-RMZ 6.3 DME and hold.

AWOS-3PT 119.025	PORTLAND APP CON ★ 120.4 299.2	CLNC DEL 123.8	UNICOM 123.05 (CTAF)
---------------------	-----------------------------------	-------------------	-------------------------



#760 when using Wiscasset altimeter setting.

One Minute Holding Pattern

NOXKS I-RMZ 6.3

2000

309°

129°

GS 3.00° TCH 51

1800

129°

*#680

3.3 NM

1 NM

1.1 NM

ZIGOS I-RMZ 3

*I-RMZ 2

I-RMZ 0.9

*LOC only

AUG R-137

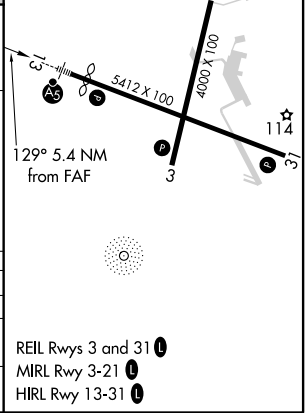
NOXKS I-RMZ 6.3

700

2000

hdg 348°

CATEGORY	A	B	C	D
S-ILS 13	254-1½		200 (200-½)	
S-LOC 13	440-1½ 386 (400-½)		440-5⁄8 386 (400-5⁄8)	
CIRCLING	580-1 525 (600-1)		720-1¾ 665 (700-1¾) 1140-3 1085 (1100-3)	



NE-1, 31 DEC 2020 to 28 JAN 2021

NE-1, 31 DEC 2020 to 28 JAN 2021