

WAAS CH 40210 W03A	APP CRS 031°	Rwy Idg TDZE 54 Apt Elev 55
--	------------------------	---

RNAV (GPS) RWY 3

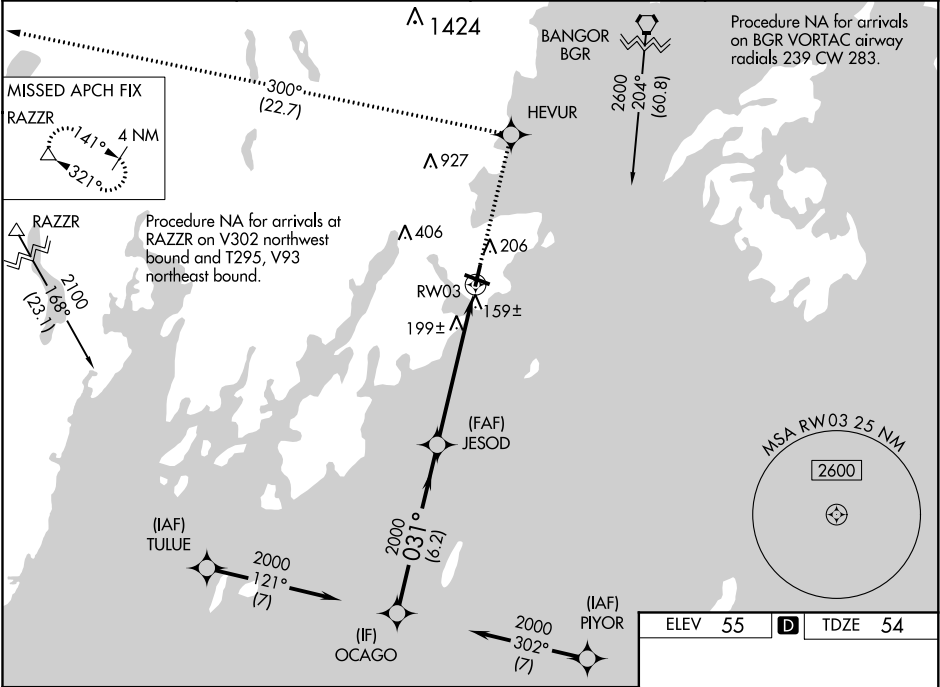
KNOX COUNTY RGNL (R.KD)

RNP APCH.

Rwy 3 helicopter visibility reduction below $\frac{3}{4}$ SM NA.
For uncompensated Baro-VNAV systems,
LNAV/VNAV NA below -15°C or above 54°C.

MISSED APPROACH: Climb to 3000 direct HEVUR and on track 300° to RAZZR and hold.

AWOS-3PT 119.025	PORTLAND APP CON ★ 120.4 299.2	CLNC DEL 123.8	UNICOM 123.05 (CTAF)
----------------------------	--	--------------------------	--------------------------------



VGSI and RNAV glidepath not coincident (VGSI Angle 3.00/TCH 34).

OCAGO

JESOD

HEVUR

RAZZR

2000

031°

2000

3000

tr 300°

Δ

*1.5 NM to RW03

*LNAV only.

GP 3.00° TCH 40

6.2 NM

4.4 NM

1.5 NM

CATEGORY	A	B	C	D
LPV DA	374-1 ¼ 320 (400-1 ¼)			
LNAV/VNAV DA	459-1 ½ 405 (500-1 ½)			
LNAV MDA	560-1 506 (600-1)	560-1 506 (600-1 ½)	560-1 506 (600-1 ½)	560-1 506 (600-1 ½)
CIRCLING	600-1 545 (600-1)	720-1 665 (700-1 ¾)	1140-3 1085 (1100-3)	

031° to RW03

REIL Rwy 3 and 31

MIRL Rwy 3-21

HIRL Rwy 13-31

NE-1, 31 DEC 2020 to 28 JAN 2021

NE-1, 31 DEC 2020 to 28 JAN 2021