

APP CRS 309°	Rwy Idg TDZE Apt Elev	5412 55 55
------------------------	-----------------------------	---------------------------------------

RNAV (GPS) RWY 31
KNOX COUNTY RGNL (RKD)

RNP APCH.

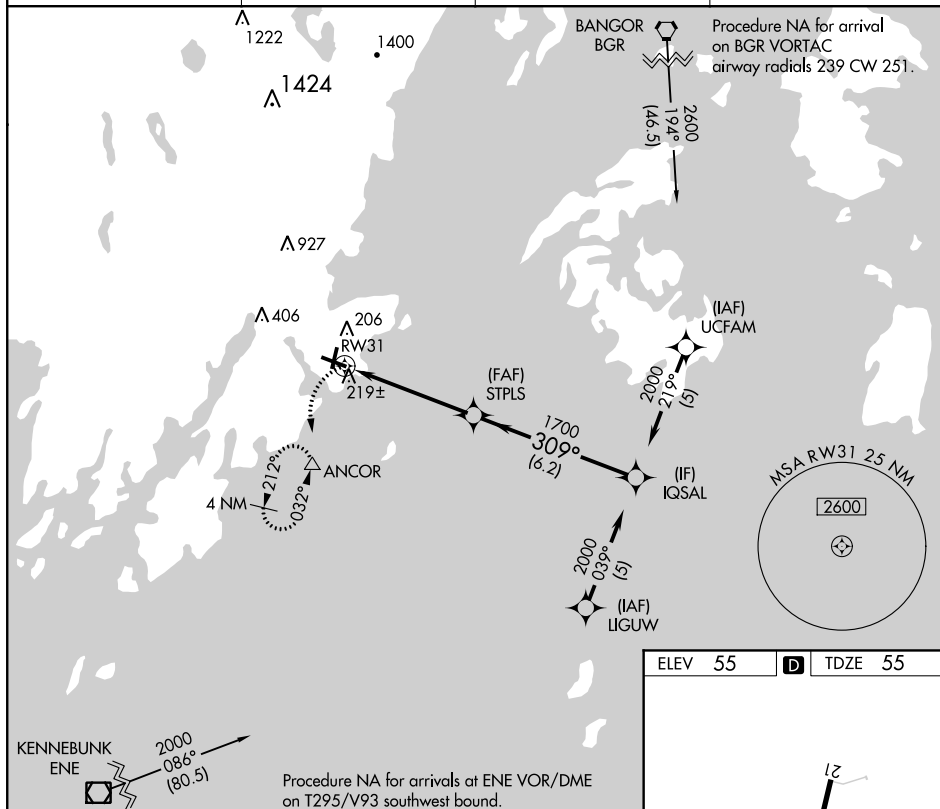
Rwy 31 helicopter visibility reduction below $\frac{3}{4}$ SM NA.

MISSED APPROACH: Climbing left turn to 2000 direct ANCOR and hold, continue climb-in-hold to 2000.

AWOS-3PT
119.025

PORTLAND APP CON ★
120.4 299.2

CLNC DEL
123.8

UNICOM
123.05 (CTAF) **L**

KENNEBUNK

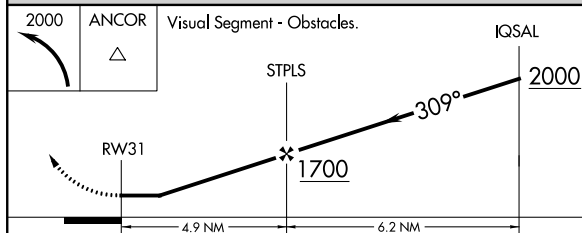
ENE


UNK
E

2000
086°
(80.5)



Procedure NA for arrivals at ENE VOR/DME
on T295/V93 southwest bound.



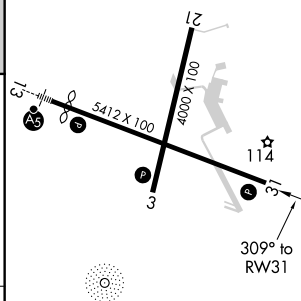
CATEGORY	A	B	C	D
LNAV MDA	480-1	425 (500-1)	480-1¼ 425 (500-1¼)	
 CIRCLING	580-1	525 (600-1)	720-1¾ 665 (700-1¾)	1140-3 1085 (1100-3)

ELEV 55

D

D TDZE 55

55



REIL Rwy 3 and 31 **L**
MIRL Rwy 3-21 **L**
HIRL Rwy 13-31 **L**

RNAV (GPS) RWY 31