

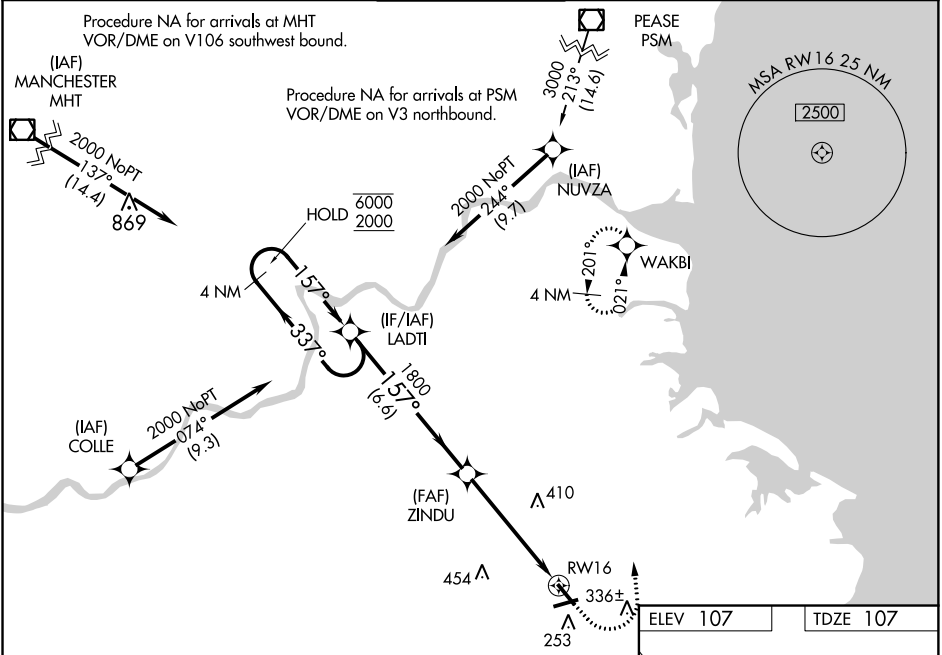


WAAS CH <b>93722</b> <b>W16A</b>	APP CRS <b>157°</b>	Rwy Idg <b>4762</b> TDZE <b>107</b> Apt Elev <b>107</b>
--	------------------------	---

RNAV (GPS) RWY 16

BEVERLY RGNL (BVY)

RNP APCH.				MALS 	MISSED APPROACH: Climb to 600 then climbing left turn to 2000 direct WAKBI and hold.
<div><div></div><div>Circling Rwy 9 NA at night. Rwy 16 helicopter visibility reduction below ¾ SM NA. Inop table does not apply. For uncompensated Baro-VNAV systems, LNAV/VNAV NA below -15° C or above 54° C.</div></div>					
ATIS <b>119.2</b>	BOSTON APP CON <b>124.4 279.6</b>	BEVERLY TOWER★ <b>125.2 (CTAF) 0</b>	GND CON <b>121.6</b>	UNICOM <b>122.95</b>	



VGSI and RNAV glidepath not coincident (VGSI Angle 3.50/TCH 41).				
4 NM Holding Pattern				
*LNAV only.				
CATEGORY	A	B	C	D
LPV DA		357-1	250 (300-1)	
LNAV/VNAV DA		422-1	315 (400-1)	
LNAV MDA	620-1	513 (600-1)	620-1 3/8	513 (600-1 3/8)
CIRCLING	620-1	513 (600-1)	820-2	880-2 1/2
			713 (800-2)	773 (800-2 1/2)

