

APP CRS
228°

Rwy Idg
TDZE
Apt Elev

5000
8
9

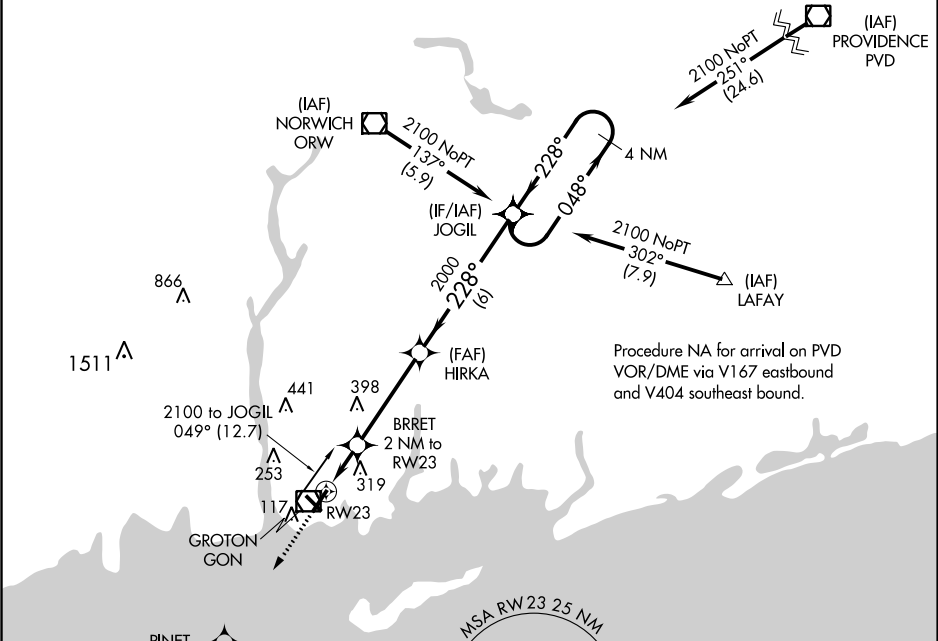
RNAV (GPS) RWY 23
GROTON-NEW LONDON (GON)

▽

DME/DME RNP-0.3 NA. Night landing: Rwy 15 NA.
Helicopter visibility reduction below 1 SM NA.

MISSED APPROACH: Climb to 2000 direct PINET and hold.

| | | | | |
|----------------------|---|---|----------------------------------|-----------------------------|
| ATIS 127.0 | PROVIDENCE APP CON ★ 125.75 319.2 | GROTON TOWER ★ 125.6 (CTAF) 236.775 | GND CON 121.65 236.775 | CLNC DEL ★ 119.85 |
|----------------------|---|---|----------------------------------|-----------------------------|



2000
↑

PINET
✱

VGSI and descent angles not coincident
(VGSI Angle 3.00/TCH 49).

4 NM
Holding Pattern

RW23

BRRET
2 NM to RW23

HIRKA

JOGIL

228°

048°

2100

800

2000

3.50°

TCH 50

2 NM

4 NM

6 NM

| | | | | |
|-----------|----------------------|----------------------|------------------------|------------------------|
| CATEGORY | A | B | C | D |
| LNNAV MDA | 560-1 | 552 (600-1) | 560-1½ 552 (600-1½) | 560-1¾ 552 (600-1¾) |
| CIRCLING | 580-1 571 (600-1) | 620-1 611 (700-1) | 620-1¾ 611 (700-1¾) | 620-2 611 (700-2) |

ELEV 9

D

TDZE 8

228° to RW23

72±

88±

68±

86±

TWR 69

4000 X 300

5000 X 150

142±

33

5

REIL Rwy 23 and 33
HIRL Rwy 5-23 and 15-33