

WAAS CH 45521 W05A	APP CRS 048°	Rwy Idg TDZE Apt Elev	5000 8 9
--	------------------------	-----------------------------	-------------------------------------

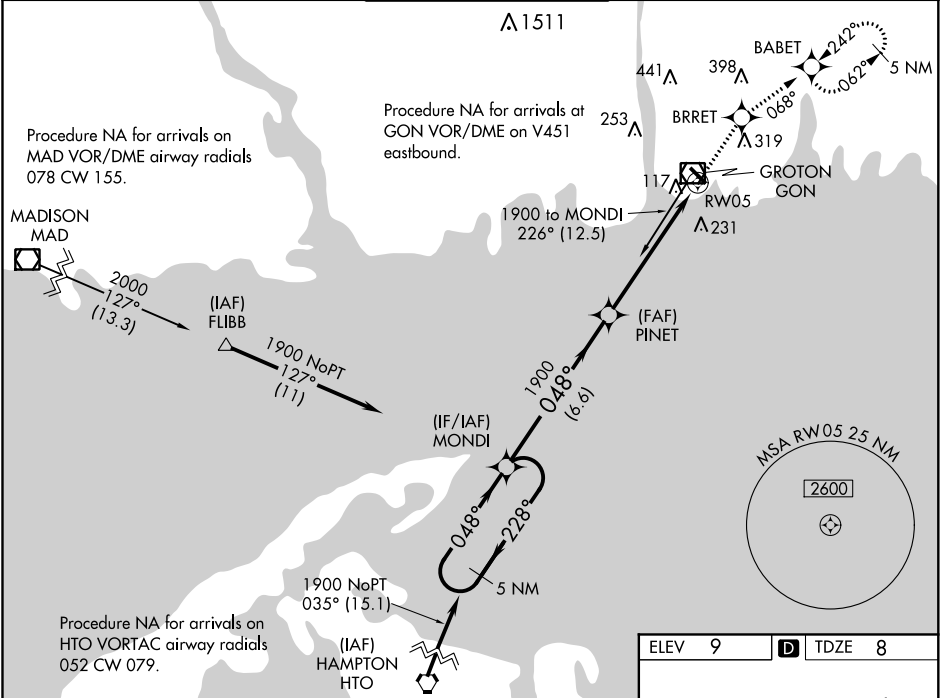
RNAV (GPS) RWY 5
GROTON-NEW LONDON (GON)

▼ For uncompensated Baro-VNAV systems, LNAV/VNAV NA below -15°C (5°F) or above 54°C (130°F). DME/DME RNP-0.3 NA.
Night landing: Rwy 15 NA. For inop MALSR, increase LPV all Cats visibility to RVR 5000 and LNAV Cat C/D visibility to 1½.

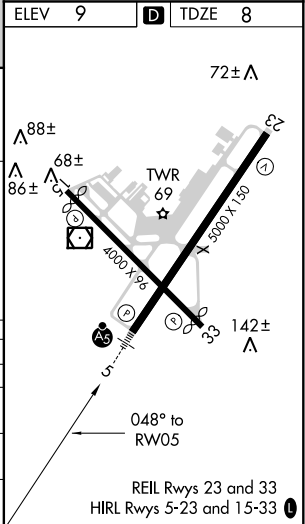
MALSR

MISSED APPROACH: Climb to 2000 direct BRRET and on track 068° to BABET and hold, continue climb-in-hold to 2000.

ATIS 127.0	PROVIDENCE APP CON ★ 125.75 319.2	GROTON TOWER ★ 125.6 (CTAF) 236.775	GND CON 121.65 236.775	CLNC DEL ★ 119.85
----------------------	---	---	----------------------------------	-----------------------------



5 NM Holding Pattern				
* 1.4 NM to RW05				
* LNAV only				
CATEGORY	A	B	C	D
LPV DA	292/24		284 (300-½)	
LNAV/VNAV DA	533-1⅜		525 (600-1⅝)	
LNAV MDA	500/24 492 (500-½)		500/50 492 (500-1)	
CIRCLING	580-1 571 (600-1)	620-1 611 (700-1)	620-1¾ 611 (700-1¾)	620-2 611 (700-2)



NE-1, 31 DEC 2020 to 28 JAN 2021

NE-1, 31 DEC 2020 to 28 JAN 2021