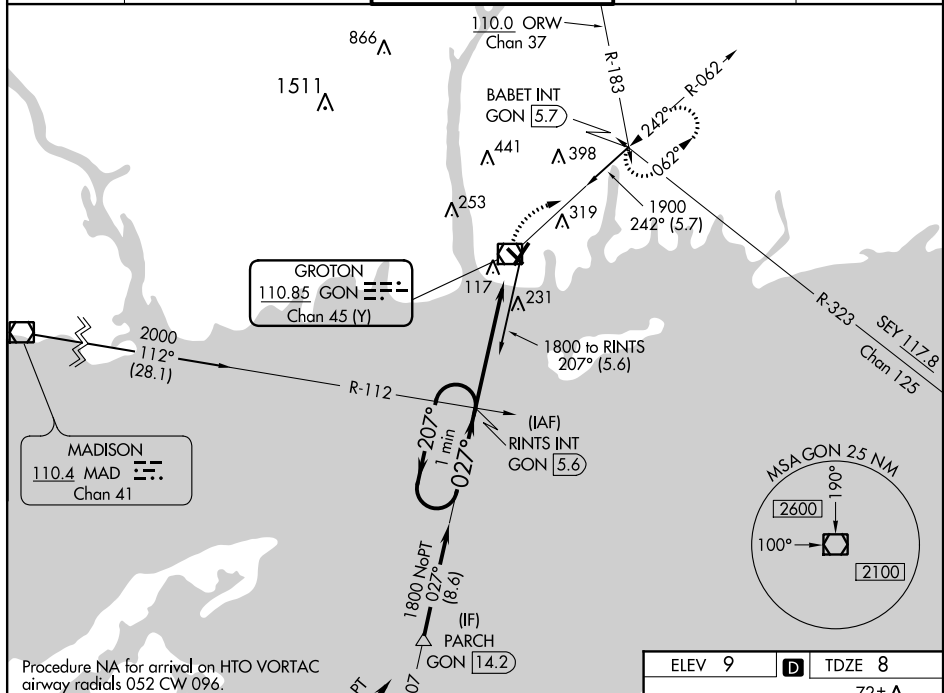


VOR RWY 5  
GROTON-NEW LONDON (GON)

MALSR

**MISSED APPROACH:** Climbing right turn to 2000 via GON R-062 to BABET INT/GON 5.7 DME and hold, continue climb-in-hold to 2000.

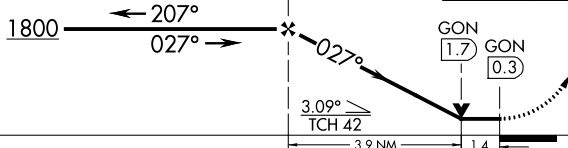
CLNC DEL★  
119.85



NE-1, 31 DEC 2020 to 28 JAN 2021

RINTS INT  
GON 5.6

2000  
GOM  
R-065

BABE  
INT

72±Λ

Λ 88±

Λ 68±

Λ 86±

TWR 69

4000 X 95

5000 X 150

142± Λ

027° 5.4 NM from FAF

REIL Rwy's 23 and 33

HIRL Rwy's 5-23 and 15-33

FAF to MAP 5.4 NM

Knots	60	90	120	150	180
Min:Sec	5:24	3:36	2:42	2:10	1:48