




APP CRS 104°	Rwy Idg TDZE Apt Elev	4001 1057 1074
------------------------	-----------------------------	---

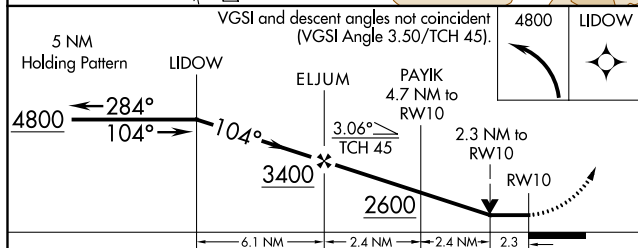
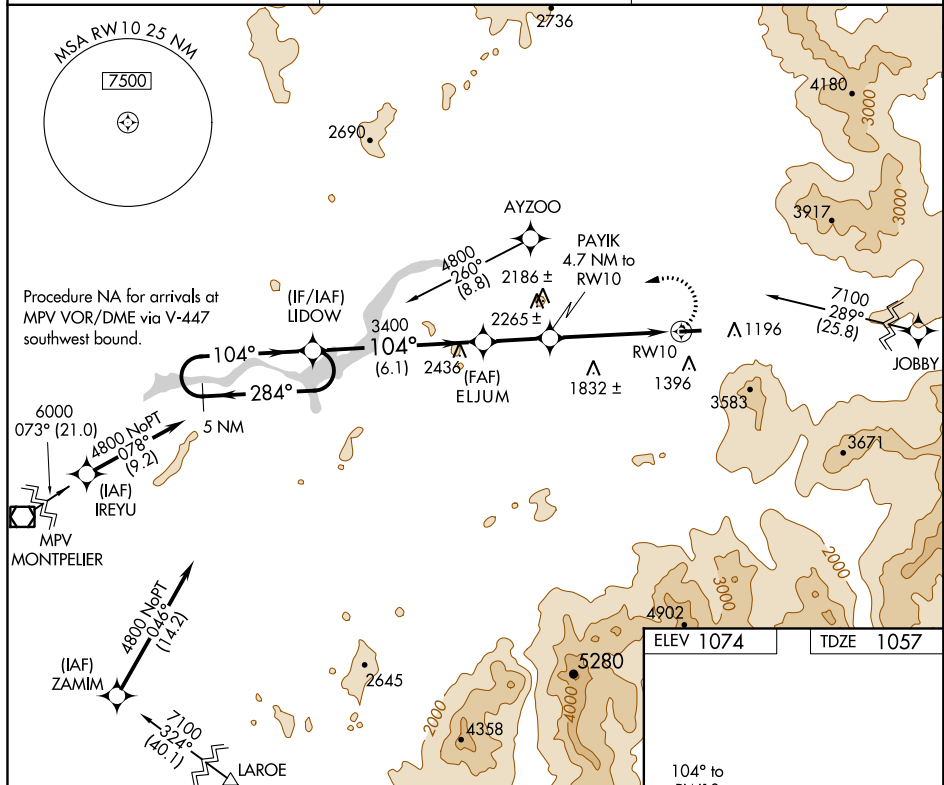
RNAV (GPS) Y RWY 10
MOUNT WASHINGTON RGNL (HIE)




 -29°C

Circling NA south of Rwy 10-28. DME/DME RNP-0.3 NA. Visibility reduction by helicopters NA. When local altimeter setting not received, use Lyndonville altimeter setting and increase all MDA 80 feet; increase LNAV and circling Cat B/C visibilities ¼ mile. VDP NA with Lyndonville altimeter setting. Circling to Rwy 28 NA at night.

MISSED APPROACH: Climbing left turn to 4800 direct LIDOW and hold.

ASOS 118.525	BOSTON CENTER 135.7 282.2	UNICOM 122.8 (CTAF) 1
------------------------	-------------------------------------	--



CATEGORY	A	B	C	D
INAV MDA	1940-1¼	883 (900-1¼)	1940-2¾ 883 (900-2¾)	NA
CIRCLING	1940-1¼	866 (900-1¼)	1940-2¾ 866 (900-2¾)	NA

