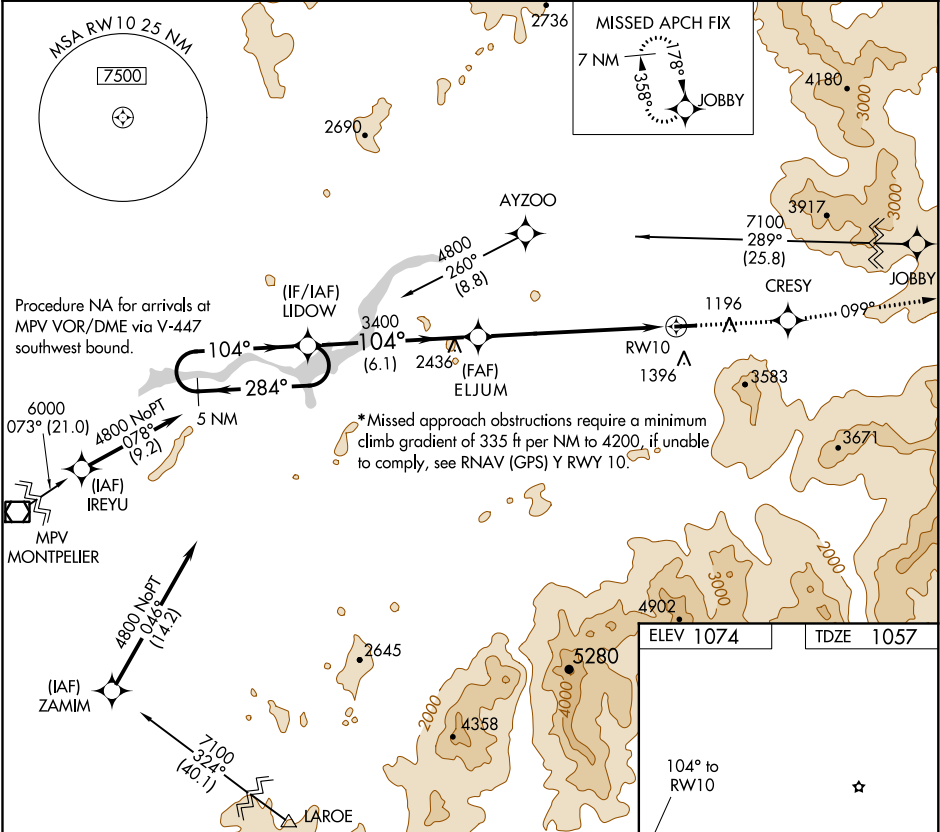


WAAS CH 53512 W10A	APP CRS 104°	Rwy Idg TDZE Apt Elev 4001 1057 1074	RNAV (GPS) Z RWY 10 MOUNT WASHINGTON RGNL (H1E)
--	------------------------	--	---

DME/DME RNP-0.3 NA. Visibility reduction by helicopters NA.
When local altimeter setting not received, use Lyndonville altimeter
setting and increase DA 71 feet and LPV all Cats visibility ½ mile.

MISSED APPROACH: Climb to 7100 direct
CRESY and via track 099° to JOBBY and
hold, continue climb-in-hold to 7100.

ASOS 118.525	BOSTON CENTER 135.7 282.2	UNICOM 122.8 (CTAF) 0
------------------------	-------------------------------------	---------------------------------



VGSI and RNAV glidepath not coincident
(VGSI Angle 3.50/TCH 45).

5 NM
Holding Pattern
LIDOW

4800 ← 284°
104° →

GP 3.00°
TCH 45

3400

6.1 NM

7.1 NM

RWY 10

CATEGORY

A

B

C

D

*LPV DA

1507-1½ 450 (500-1½)

NA

7100 CRESY

tr 099°

JOBBY

0.6% UP →

4001 X 75

28

REIL Rwy 10 and 28 0

MIRL Rwy 10-28 0