

RNAV (GPS) RWY 24  
PLYMOUTH MUNI (PYM)

**T** Circling Rwy 15 NA at night.  
Rwy 24 helicopter visibility reduction below  $\frac{3}{4}$  SM NA.  
For uncompensated Baro-VNAV systems, LNAV/VNAV NA below -17°C (2°F) or above 54°C (130°F).

**MISSED APPROACH:** Climb to 640 then climbing left turn to 2000 direct GAILS and hold.

|                        |  |                           |                                 |  |
|------------------------|--|---------------------------|---------------------------------|--|
| ASOS<br><b>135.625</b> | BOSTON APP CON ★<br><b>118.2 284.6</b> | CLNC DEL<br><b>127.75</b> | UNICOM<br><b>122.725</b> (CTAF) | <b>122.9</b>  |
|------------------------|--|---------------------------|---------------------------------|--|

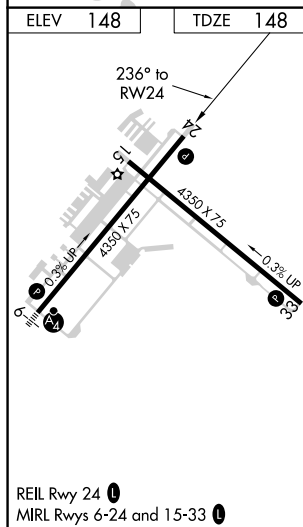
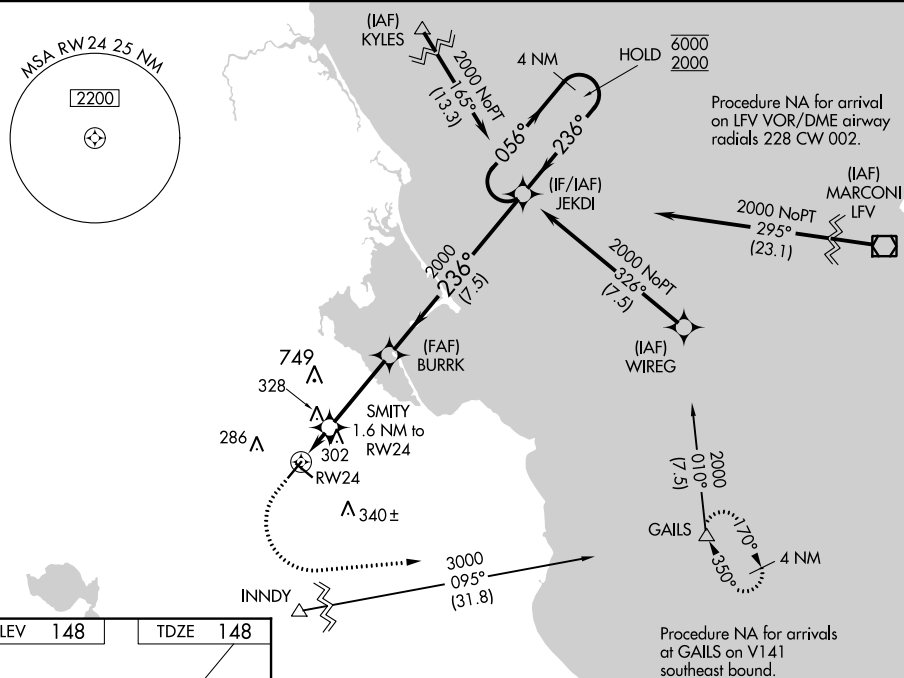


Diagram illustrating the 4 NM Holding Pattern for the 640-2000 frequency. The pattern is a right-hand holding pattern with a 1 NM initial turn, followed by 0.6 NM and 3.4 NM legs, and a 7.5 NM final leg. The holding pattern is centered on the 2000 frequency. The diagram shows the 640 and 2000 frequencies, the GAILS (GLIDE) and BURRK (BURR) glidepaths, and the 4 NM Holding Pattern. The holding pattern is a right-hand pattern with a 1 NM initial turn, followed by 0.6 NM and 3.4 NM legs, and a 7.5 NM final leg. The holding pattern is centered on the 2000 frequency.

NE-1, 31 DEC 2020 to 28 JAN 2021