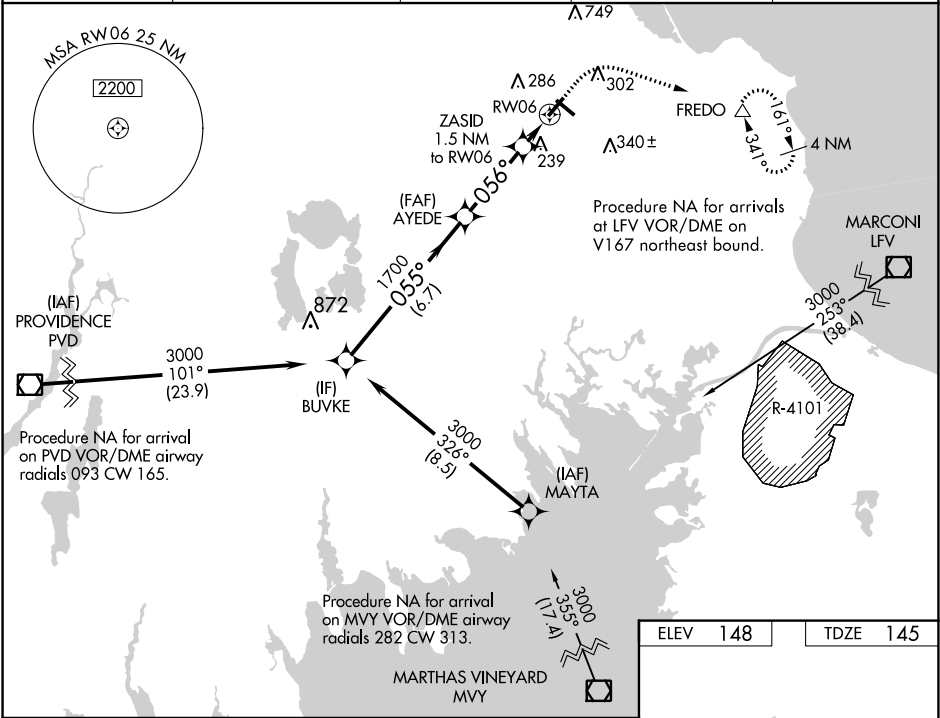


WAAS CH 40422 W06A	APP CRS 056°	Rwy Idg TDZE 145 Apt Elev 148	4350
--	------------------------	---	-------------

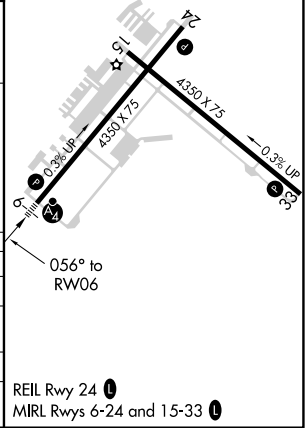
RNAV (GPS) RWY 6
PLYMOUTH MUNI (PYM)

RNP APCH. <div><div>▼</div><div>Circling Rwy 15 NA at night. Rwy 6 helicopter visibility reduction below ¾ SM NA. For uncompensated Baro-VNAV systems, LNAV/VNAV NA below -17°C (2°F) or above 54°C (130°F). Inop table does not apply to LPV. For inop ALS, increase LNAV/VNAV all Cats visibility to ¾ SM.</div></div>	MALSF <div><div>●</div><div>—</div></div>	MISSED APPROACH: Climb to 600 then climbing right turn to 1900 direct FREDO and hold.
---	--	--

ASOS 135.625	BOSTON APP CON * 118.2 284.6	CLNC DEL 127.75	UNICOM 122.725 (CTAF)	122.9 0
------------------------	--	---------------------------	---------------------------------	----------------



VGSI and RNAV glidepath not coincident (VGSI Angle 3.00/TCH 40).			
BUVKE			
3000			
055°			
1700			
056°			
*660			
RW06			
6.7 NM 3.3 NM 1.5 NM			
*LNAV only.			
600 1900 FREDO			
GP 3.00° TCH 50			
LPV DA 345-¾ 200 (200-¾) NA			
LNAV/VNAV DA 426-¾ 281 (300-¾) NA			
LNAV MDA 500-¾ 355 (400-¾) NA			
CIRCLING 620-1 472 (500-1) 640-1 492 (500-1) 740-1½ 592 (600-1½) NA			



NE-1, 31 DEC 2020 to 28 JAN 2021

NE-1, 31 DEC 2020 to 28 JAN 2021