

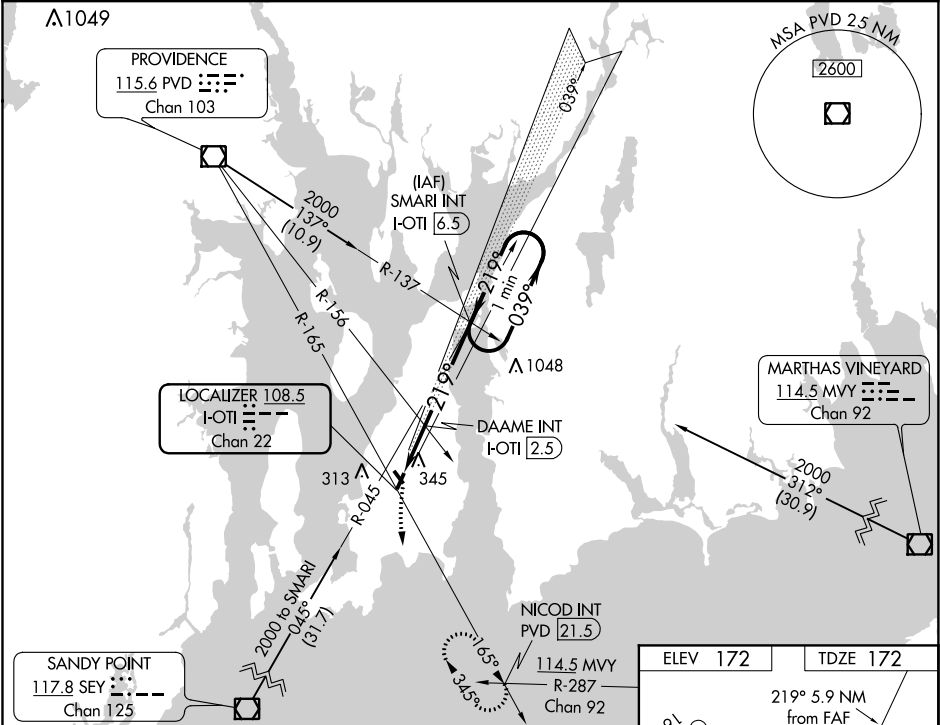
LOC/DME	I-OTI	APP CRS	Rwy Idg	2999
108.5		219°	TDZE	172
Chan 22			Apt Elev	172

LOC RWY 22

NEWPORT STATE (UUU)

<div><div>NA</div><div>When local altimeter setting not received, use Providence altimeter setting and increase all MDA 60 feet. Straight-in Rwy 22 NA at night, Circling Rwy 4, 22, 34 NA at night.</div></div>	<div>MISSED APPROACH: Climbing left turn to 2100 via PVD VOR/DME R-165 to NICOD INT/21.5 DME and hold.</div>
--	--

ASOS 132.075	PROVIDENCE APP CON* 128.7 269.525	CLNC DEL 127.25	UNICOM 123.05 (CTAF) 0
-----------------	--------------------------------------	--------------------	---------------------------



2100 PVD R-165		NICOD INT	SMARI INT I-OTI 6.5	One Minute Holding Pattern
DAAME INT I-OTI 2.5		I-OTI 0.6	219°	039°
720*		1800	219°	2000
1.9 NM		4 NM	*780 when using Providence altimeter setting.	
CATEGORY	A	B	C	D
S-22	720-1	548 (600-1)	720-1 <sup>5</sup> / <sub>8</sub> 548 (600-1 <sup>5</sup> / <sub>8</sub> )	NA
CIRCLING	760-1	588 (600-1)	760-1 <sup>1</sup> / <sub>2</sub> 588 (600-1 <sup>1</sup> / <sub>2</sub> )	NA
DAAME FIX MINIMUMS (DUAL VOR RECEIVERS OR DME REQUIRED)				
S-22	640-1	468 (500-1)	640-1 <sup>1</sup> / <sub>4</sub> 468 (500-1 <sup>1</sup> / <sub>4</sub> )	NA
CIRCLING	760-1	588 (600-1)	760-1 <sup>1</sup> / <sub>2</sub> 588 (600-1 <sup>1</sup> / <sub>2</sub> )	NA

