

WAAS
CH **42901**
W18A

APP CRS
185°

Rwy ldg **5801**
TDZE **730**
Apt Elev **730**

RNAV (GPS) RWY 18

WATERBURY-OXFORD (OXC)

RNP APCH.

▼ Rwy 18 helicopter visibility reduction below ¾ SM NA.

▲ For uncompensated Baro-VNAV systems, LNAV/VNAV NA below -16°C or above 54°C.

MISSED APPROACH: Climb to 2500 direct CUTMA and hold.

ATIS
132.975

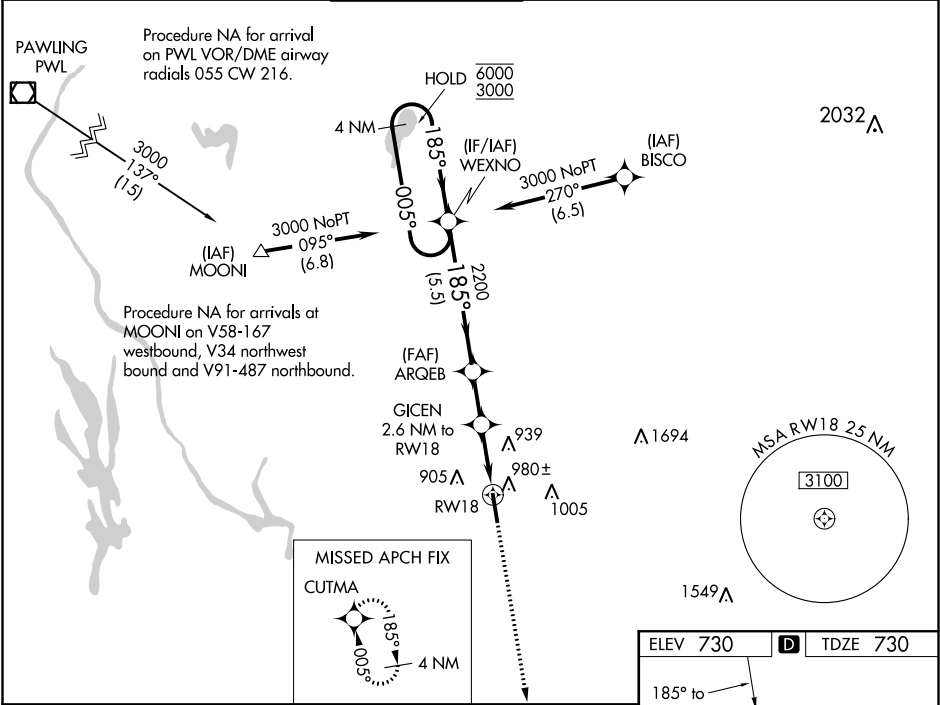
NEW YORK APP CON
124.075 343.65

OXFORD TOWER ★
118.475 (CTAF) 0

GND CON
121.65

CLNC DEL
121.65

UNICOM
122.95



4 NM Holding Pattern WEXNO

6000 3000

GP 3.00° TCH 47

ARQEB 2200

GICEN 2.6 NM to RW18

2500 CUTMA

*LNAV only

*1.5 NM to RW18

RW18

5.5 NM

1.9 NM

1.1 NM

1.5 NM

CATEGORY	A	B	C	D
LPV DA		1140-1½	410 (500-1½)	
LNAV/VNAV DA		1141-1½	411 (500-1½)	
LNAV MDA	1240-1	510 (600-1)	1240-1¾	510 (600-1¾)
CIRCLING	1300-1	570 (600-1)	1380-1¾	1460-2¼
			650 (700-1¾)	730 (800-2¼)

ELEV 730 D TDZE 730

185° to RW18

81

TWR ★

5801 X 100

36

REIL Rwy 36 0

HIRL Rwy 18-36 0