

VOR/DME YJN 115.8 Chan 105	APP CRS 169°	Rwy Idg 3001 TDZE 228 Apt Elev 228
--	------------------------	---

VOR RWY 19

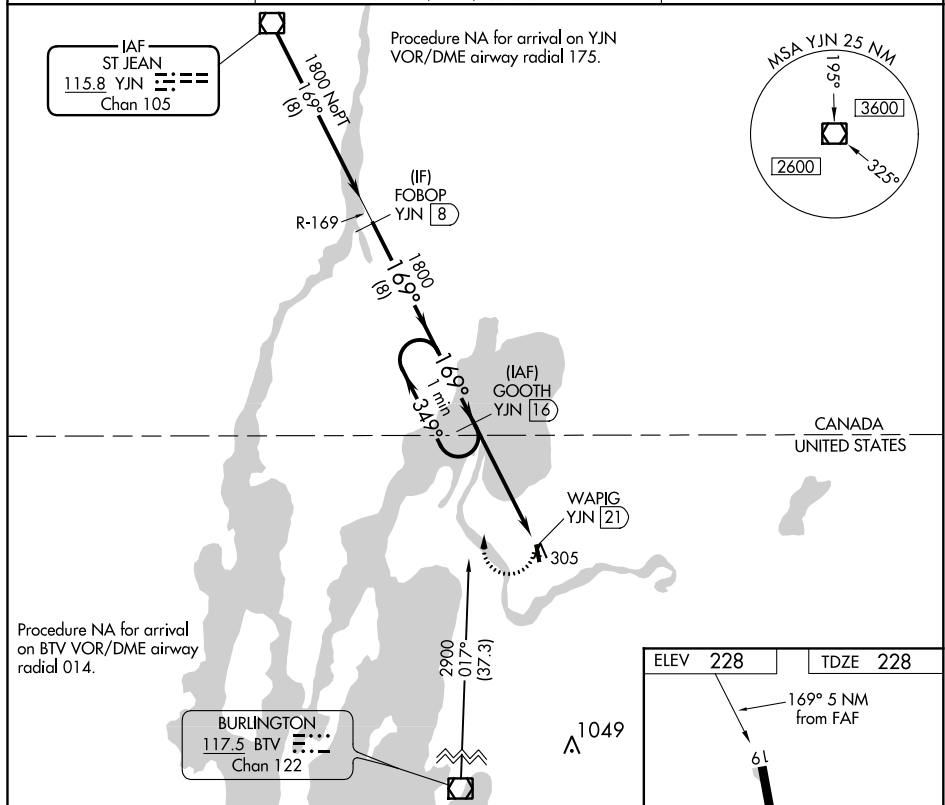
FRANKLIN COUNTY STATE (FSO)

DME required for procedure entry. DME required.

T Rwy 19 helicopter visibility reduction below 1 SM NA. Procedure NA at night.
A NA When local altimeter setting not received, use Plattsburgh altimeter setting and increase all MDA 60 feet.

MISSED APPROACH: Climbing right turn to 1800 on YJN VOR/DME R-169 to GOOTH/YJN 16 DME and hold

AWOS-3 119.025	BURLINGTON APP CON ★ 121.1 (EAST) 278.8 (WEST) 360.8	UNICOM 122.8 (CTAF) 0
--------------------------	---	--

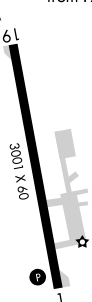


Procedure NA for arrival
on BTV VOR/DME airway
radial 014.

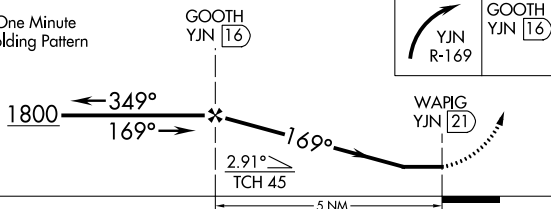
CANADA
UNITED STATES

ELEV 228		TDZE 228
----------	--	----------

169° 5 NM
from FAF



One Minute Holding Pattern



CATEGORY	A	B	C	D
S-19	880-1	652 (700-1)	NA	
CIRCLING	880-1 652 (700-1)	880-1 $\frac{1}{4}$ 652 (700-1 $\frac{1}{4}$)	NA	

MIRL Rwy 1-19 **L**
REIL Rwy 1 and 19 **L**