

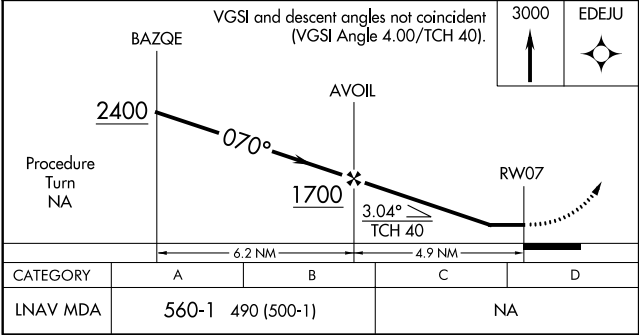
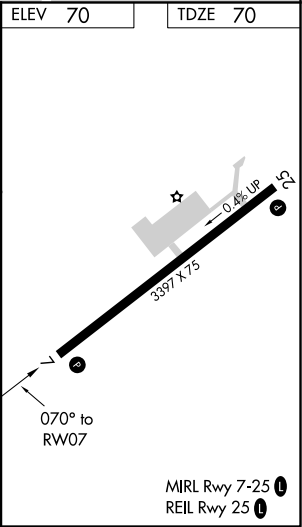
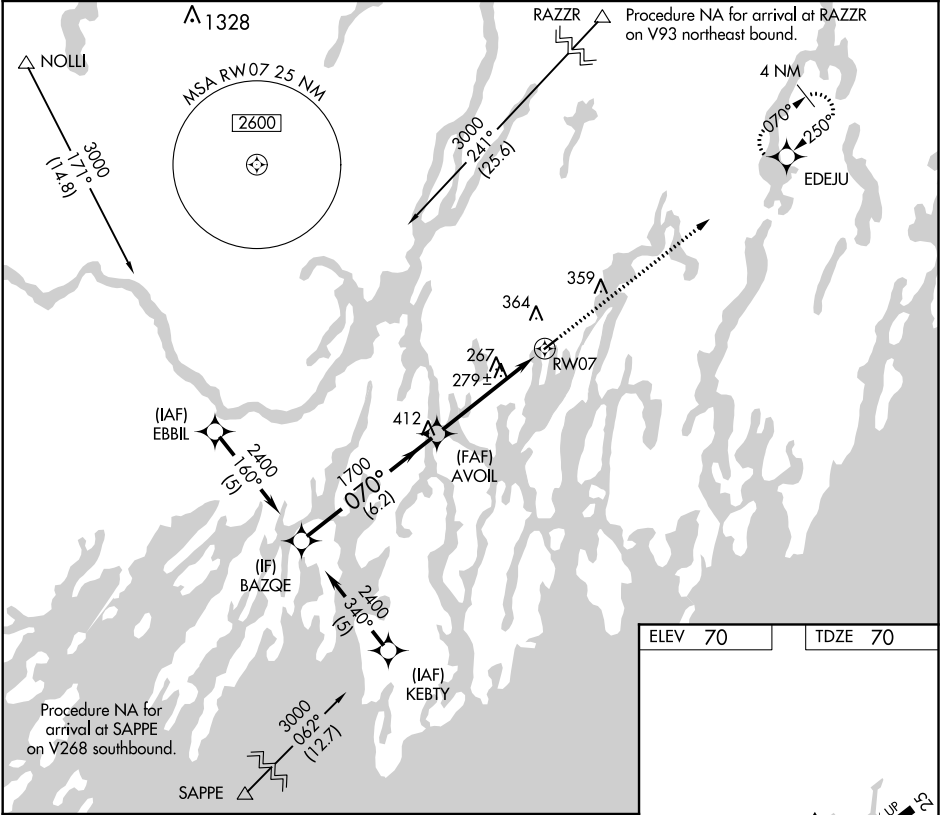
APP CRS	Rwy Idg	3397
070°	TDZE	70
	Apt Elev	70

RNAV (GPS) RWY 7

WISCASSET (IWI)

RNP APCH.	MISSED APPROACH: Climb to 3000 direct EDEJU and hold.
<div><div>▼</div><div>▲</div></div> <div>Procedure NA at night. Rwy 7 helicopter visibility reduction below 1 SM NA. When local altimeter setting not received use Rockland altimeter setting and increase all MDA 80 feet.</div>	

ASOS 135.725	PORTLAND APP CON★ 119.75 269.35 (112° -292°) 120.4 299.2 (293°-111°)	UNICOM 122.8 (CTAF) 0
-----------------	--	--------------------------



NE-1, 31 DEC 2020 to 28 JAN 2021

NE-1, 31 DEC 2020 to 28 JAN 2021