

APP CRS
354°

Rwy Idg
TDZE
Apt Elev
2722
416
416

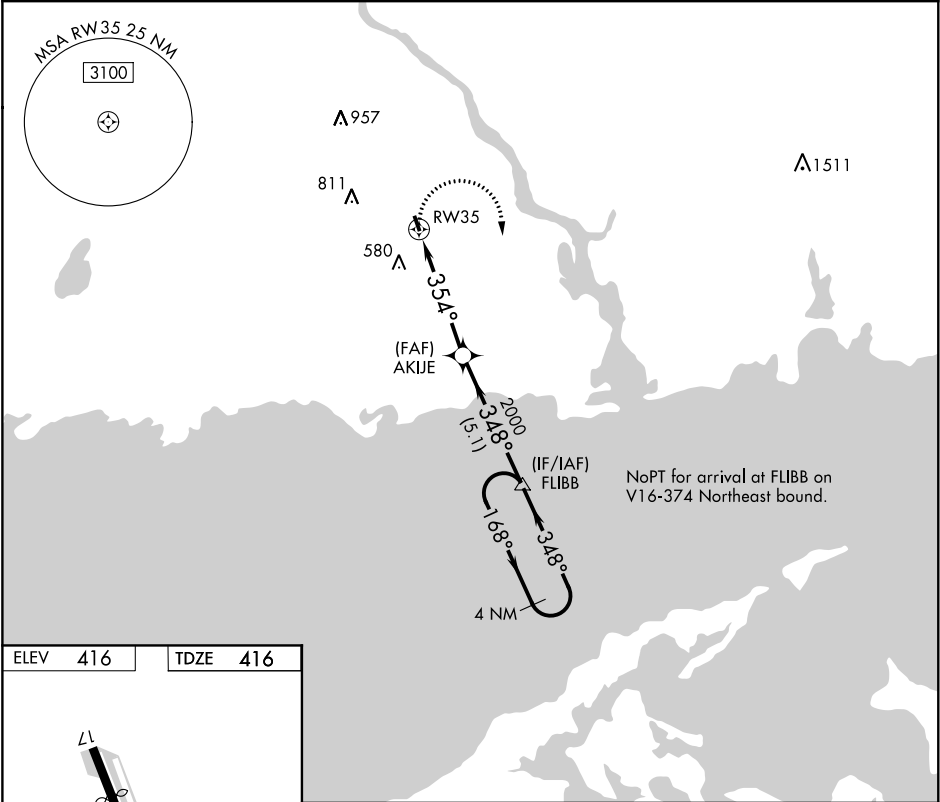
RNAV (GPS) RWY 35
CHESTER (SNC)

▼

DME/DME RNP-0.3 NA. Procedure NA at night. Helicopter visibility reduction below 1 SM NA. When local altimeter setting not received, use Meriden altimeter setting and increase all MDA 100 feet.

MISSED APPROACH: Climbing right turn to 2100 direct FLIBB and hold.

AWOS-3 118.325	NEW YORK APP CON 124.075 343.65	UNICOM 122.725 (CTAF)
--------------------------	---	---------------------------------



ELEV 416

TDZE 416

2100

FLIBB

AKIJE

FLIBB

2100

4.8 NM

5.1 NM

CATEGORY	A	B	C	D
LNAV MDA	820-1	404 (500-1)	NA	NA
CIRCLING	920-1	504 (600-1)	NA	NA