

WAAS CH 99536 W15A	APP CRS 151°	Rwy Idg TDZE 198 Apt Elev 198	4000
--	------------------------	---	-------------

RNAV (GPS) RWY 15

BELFAST MUNI (BST)

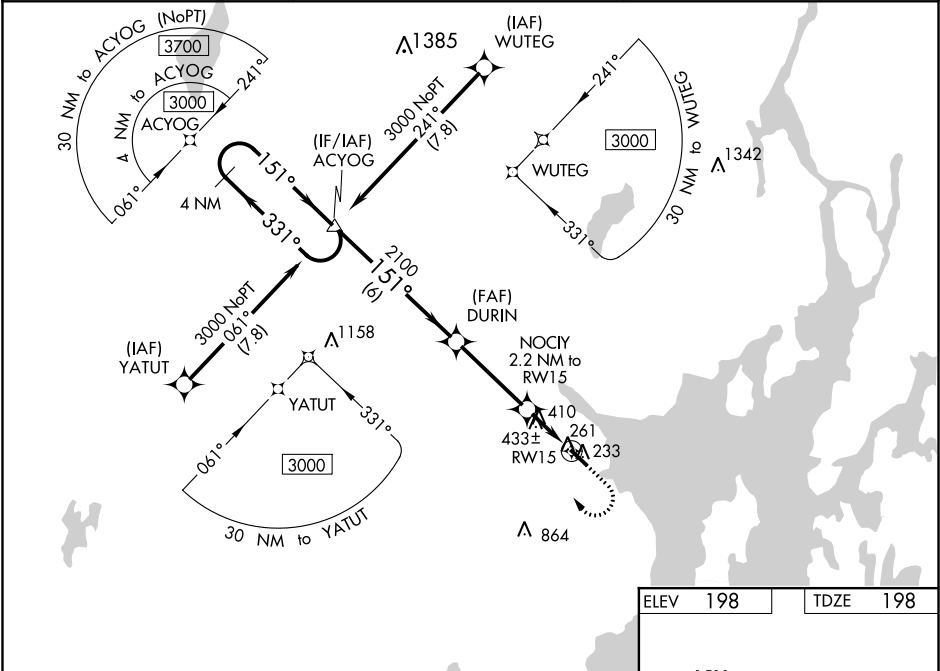
▼

▲ NA

For uncompensated Baro-VNAV systems, LNAV/VNAV NA below -23°C (-9°F) or above 54°C (130°F). DME/DME RNP -0.3 NA. When local altimeter not received, use Bangor Intl altimeter setting and increase all DA/MDA 60 feet. Increase LPV all Cats visibility ½ mile; increase LNAV/VNAV all Cats visibility ¾ mile; increase LNAV and Circling Cat C visibility ¼ mile. Baro-VNAV NA when using Bangor Intl altimeter. Helicopter visibility reduction below ¾ SM NA.

MISSED APPROACH: Climb to 900 then climbing right turn to 3000 direct ACYOG and hold.

AWOS-AV 122.975	BANGOR APP CON 118.925 239.3	UNICOM 122.975 (CTAF) 0
---------------------------	--	-----------------------------------



4 NM Holding Pattern ACYOG		900 3000 ACYOG	
3000 ← 331° 151° →		151° 2100	
GP 3.08° TCH 40		NOCII 2.2 NM to RW15	
2100		RW15	
6 NM		3.5 NM	
2.2 NM		940	
A		B	
LPV DA		487-1 289 (300-1)	
LNAV/ VNAV DA		748-1 7/8 550 (600-1 7/8)	
LNAV MDA		720-1 522 (600-1) 720-1 1/2 522 (600-1 1/2)	
CIRCLING		720-1 522 (600-1) 800-1 602 (700-1) 1040-2 1/2 842 (900-2 1/2)	

