

WAAS CH 90336 W33A	APP CRS 332°	Rwy Idg TDZE Apt Elev	4000 190 198
--	------------------------	-----------------------------	---

RNAV (GPS) RWY 33

BELFAST MUNI (BST)

RNP APCH

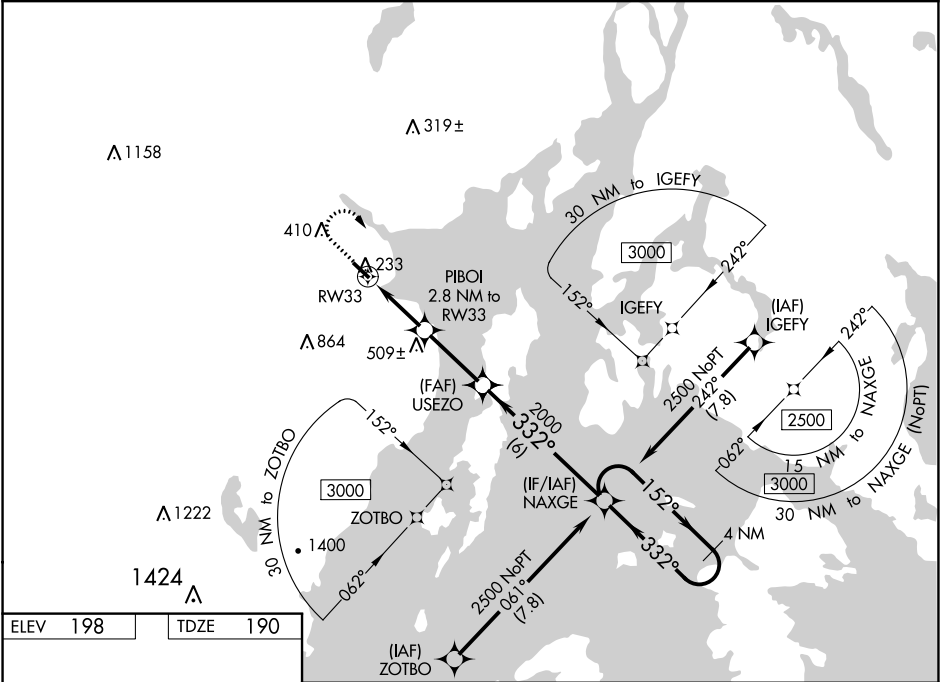
▼

▲ NA

Baro-VNAV NA when using Bangor Intl altimeter setting. For uncompensated Baro-VNAV systems, LNAV/VNAV NA below -20°C (-4°F) or above 54°C (130°F). Rwy 33 helicopter visibility reduction below ¼ SM NA. When local altimeter setting not received, use Bangor Intl altimeter setting and increase all DA/MDA 60 feet; increase LPV Cats A/B, LNAV/VNAV all Cats and Circling Cat C visibility ¼ SM, increase LPV and LNAV Cat C visibility ½ SM.

MISSED APPROACH:
Climb to 660 then
climbing right turn to
2500 direct NAXGE
and hold.

AWOS-AV 122.975	BANGOR APP CON 118.925 239.3	UNICOM 122.975 (CTAF) 0
---------------------------	--	-----------------------------------



ELEV 198 TDZE 190

MIRL Rwy 15-33
REIL Rws 15 and 33

660 2500 NAXGE			
* LNAV only			
USEZO 2000			
PIBOI 2.8 NM to RW33			
RW33 1080*			
2.8 NM 2.9 NM 6 NM			
CATEGORY	A	B	C
LPV DA	440-1	250 (300-1)	NA
LNAV/VNAV DA	512-1¼	322 (400-1¼)	NA
LNAV MDA	580-1	390 (400-1)	580-1½ 390 (400-1½)
CIRCLING	700-1 502 (600-1)	800-1 602 (700-1)	1040-2½ 842 (900-2½)