

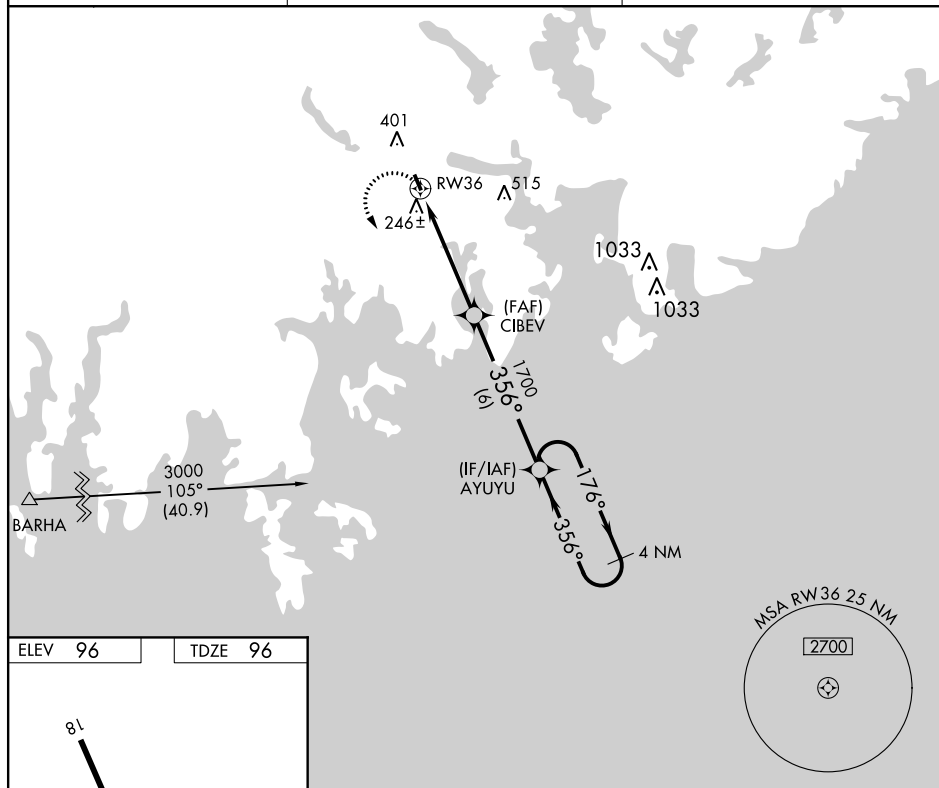
APP CRS	Rwy Idg	2880
356°	TDZE	96
	Apt Elev	96

RNAV (GPS) RWY 36
MACHIAS VALLEY (MVM)

NA Procedure NA at night. Helicopter visibility reduction below 1 SM NA. DME/DME RNP-0.3 NA. Use Bar Harbor altimeter setting, if not received, use Bangor altimeter setting and increase all MDAs 60 feet.

MISSED APPROACH: Climbing left turn to 3000 direct AYUYU and hold.

AWOS-AV 122.8	BOSTON CENTER 124.25 290.5	UNICOM 122.8 (CTAF) 0
-------------------------	--------------------------------------	---------------------------------



REIL Rwy 36 **L**
MRL Rwy 18-36 **L**

3600x60
0.2% UP
356° to RW36
356°
RW36
4.9 NM
3.04°
TCH 40
1700
356°
6 NM
176°
356°
4 NM Holding Pattern
3000
AYUYU
CIBEV

CATEGORY	A	B	C	D
LNAV MDA	940-1 844 (900-1)	940-1½ 844 (900-1½)	NA	
CIRCLING	1100-1½ 1004 (1100-1½)	1100-1½ 1004 (1100-1½)	NA	